

# PRO 200 SERIES



**PRO**  
200 SERIES

**Type:** Full Extension Soft-Close Ball Bearing

**Mounting:** Side

**Weight Rating:** 100 lbs.

**Clearance:** 1/2" + 1/32" -0

**Material:** Cold Rolled Steel

**Hole Pattern:** 32mm

**Finish:** Bright Zinc

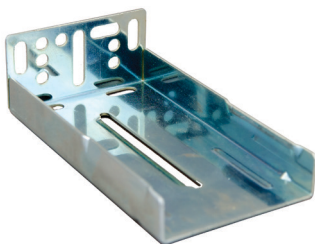
**Industry Rated:** BHMA, KCMA, BIFMA, ANSI, SEFA 8.99

- Ultra smooth soft-close function.
- Continuous bearings ensure smooth and quiet performance.
- Unhanded.
- Lever disconnect.
- Designed for frameless and face frame applications.

**Packing & Sold In:** Full box quantities of 10 sets.

## WHAT PRO SERIES MEANS TO YOU: QUALITY. AFFORDABLE. IN-STOCK.

- Backed by a limited lifetime warranty.
- Inventoried locally for expedient delivery.



**Item #: DSPRO200RB**

Packing: 100 pair per box

Sold in: Pairs

Item #	Size
DSPRO200-14	14"
DSPRO200-16	16"
DSPRO200-18	18"
DSPRO200-20	20"
DSPRO200-22	22"
DSPRO200-24	24"

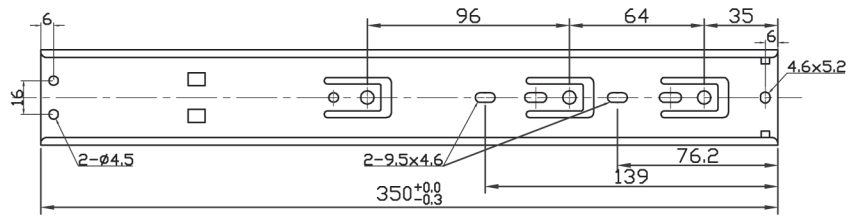
**Würth Baer Supply**

[www.wurthbaersupply.com](http://www.wurthbaersupply.com) • 800-289-2237 • Fax: 888-558-2237

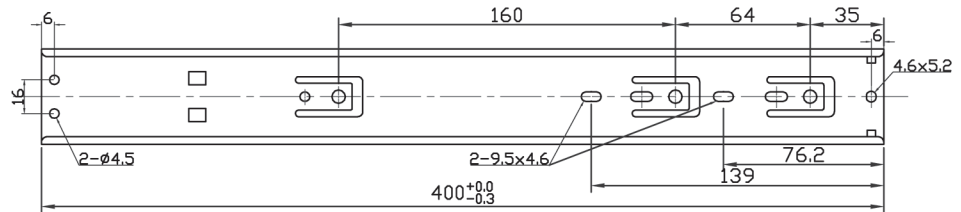
If you wish to not receive future fax messages or advertisements from Würth Baer Supply, please send your opt-out request to us by either Email: [creditreference@wurthbaersupply.com](mailto:creditreference@wurthbaersupply.com), Fax: 847-613-3333, or Phone: 800-289-2237. When submitting your opt-out request, please specify the phone number(s) of the fax machine(s) covered by your request. We will comply with your opt-out request as soon as possible. **Thank you & have a great day!**

## Pro 200 Drawer Slides

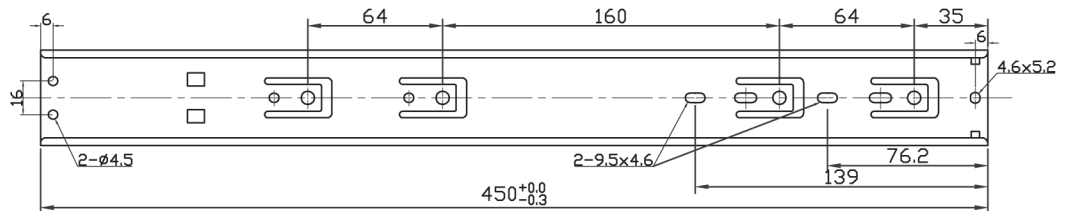
**PRO**  
200 SERIES



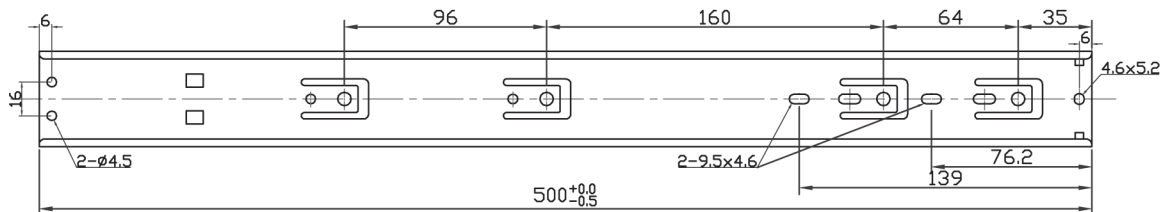
14"



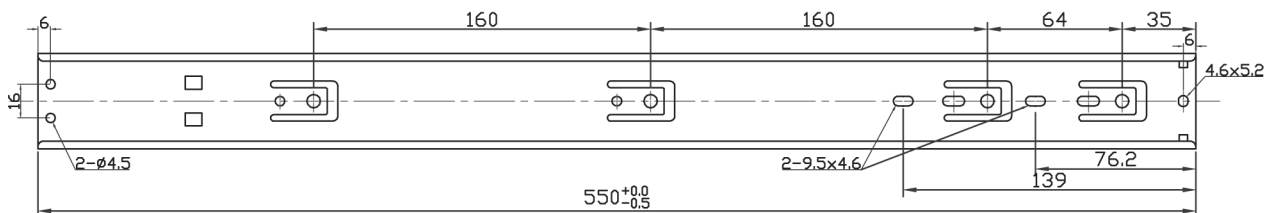
16"



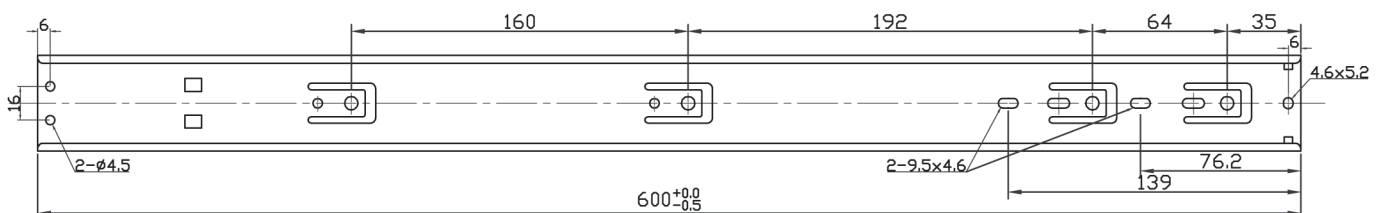
18"



20"



22"



24"

**Würth Baer Supply**

[www.wurthbaersupply.com](http://www.wurthbaersupply.com) • 800-289-2237 • Fax: 888-558-2237

If you wish to not receive future fax messages or advertisements from Würth Baer Supply, please send your opt-out request to us by either Email: [creditreference@wurthbaersupply.com](mailto:creditreference@wurthbaersupply.com), Fax: 847-613-3333, or Phone: 800-289-2237. When submitting your opt-out request, please specify the phone number(s) of the fax machine(s) covered by your request. We will comply with your opt-out request as soon as possible. **Thank you & have a great day!**