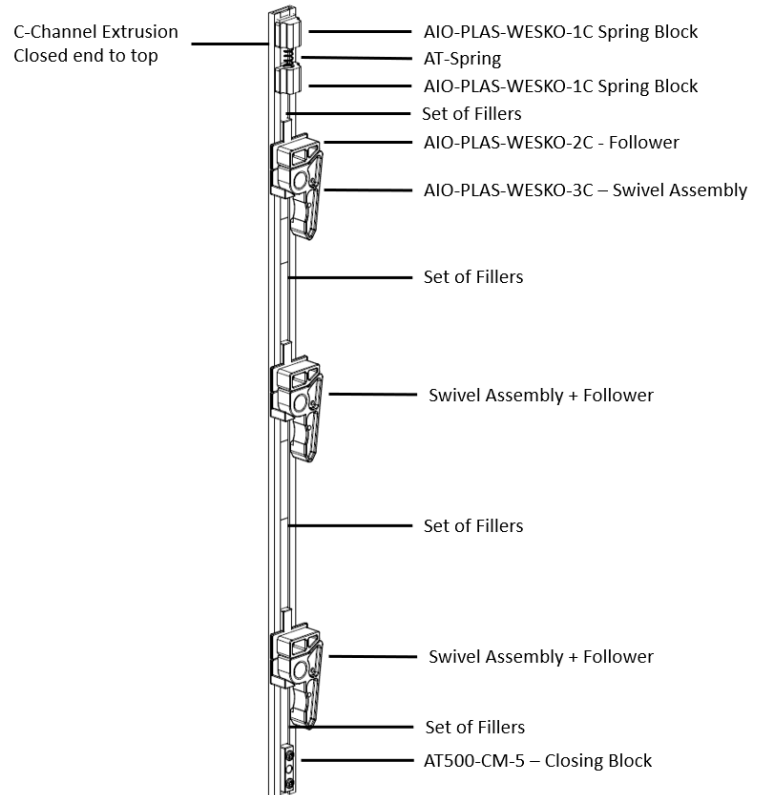


Wesko Anti-Tip System For Ball Bearing Slides – Kit Assembly Guide

This guide details the assembly of the Wesko's Anti-Tip Interlock system from components.

This schematic shows the final assembly and the component parts.

- Top block set with spring
- Swivel assemblies/follower set for each drawer
- Set of fillers between each drawer
- Closing bottom block



To start the assembly, the closed end of the extrusion with the 90° support bracket is the top. Apply lubricant of your choice (e.g., silicone) into the C-Channel with a small paintbrush. Components and fillers are loaded in sequence from the bottom (open) end. By holding the assembly vertically, the parts will slide into place. Once the assembly is complete, it will be tested and closed via the closing block at the bottom of the extrusion.

Depending on the amount of free space below the extrusion, it may be necessary to cut the extrusion to length. Cut the extrusion to the required length anywhere below the closing block.

Example Assembly

This illustration shows the assembly for a 3-drawer interlock system. As you read this example, refer to the worksheets in Appendix B & C.

TOP DRAWER ONLY (Appendix B)

- “A” dimension of 4” from inside the top cabinet panel to the top of the 1st drawer slide. Using entry of 4” in Appendix B, filler 17.46 is required.

FOR TOP DRAWER ONLY

DRAWER SIZE	TOP FILLER LENGTH	STANDARD FILLER QUANTITIES							
		0.688	0.813	1	1.25	1.5	1.75	2	4
	INCH	0.688	0.813	1	1.25	1.5	1.75	2	4
	MM	17.46	20.64	25.4	31.75	38.1	44.45	50.8	101.6
3.3125	0								
4	0.688	*							

ALL LOWER DRAWERS (Appendix C)

- “B” dimension of 5” from the top of the 1st slide to the top of the 2nd slide. Using entry for 5” in Appendix “C”, fillers 17.46, 25.40 and 44.45 are required.

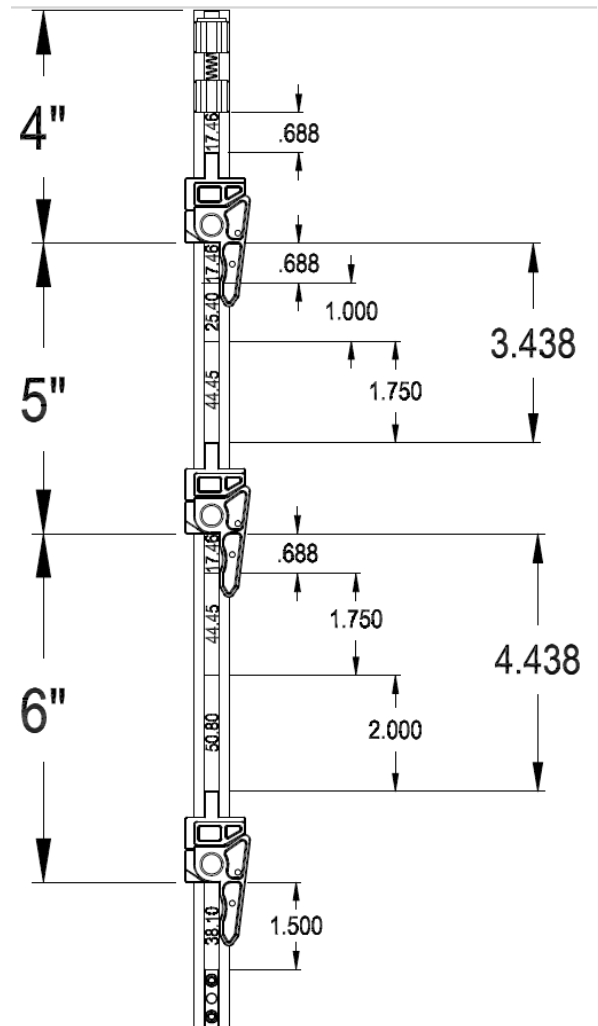
FOR ALL LOWER DRAWERS

DRAWER SIZE	LOWER FILLER LENGTH	STANDARD FILLER QUANTITIES							
		0.688	0.813	1	1.25	1.5	1.75	2	4
	INCH	0.688	0.813	1	1.25	1.5	1.75	2	4
	MM	17.46	20.64	25.4	31.75	38.1	44.45	50.8	101.6
4.500	2.938	*							
4.750	3.188	*							
5.000	3.438	*							

- “C” dimension of 6” from the top of the 2nd slide to the top of the 3rd slide. Using entry for 6” in Appendix “C”, fillers 17.46, 44.45 and 50.80 are required.

FOR ALL LOWER DRAWERS

DRAWER SIZE	LOWER FILLER LENGTH	STANDARD FILLER QUANTITIES							
		0.688	0.813	1	1.25	1.5	1.75	2	4
	INCH	0.688	0.813	1	1.25	1.5	1.75	2	4
	MM	17.46	20.64	25.4	31.75	38.1	44.45	50.8	101.6
5.750	4.188	*				*		*	
6.000	4.438	*				*		*	



- Additional dimensions D, E & F can be added for additional drawers.
- The bottom filler is 38.10MM (1.5”).

Closing the Assembly

Place filler 38.1mm (1.5") below the bottom actuator, then install the closing block. Secure the bottom block with the following procedures. Open one actuator, then press firmly upwards on the bottom block until the gap in the top block set is reduced to <1 MM gap. Holding this in place, tighten the set screws.

Measure the distances between the actuators and test the assembly. Cut the extrusion to length below the bottom closing block.

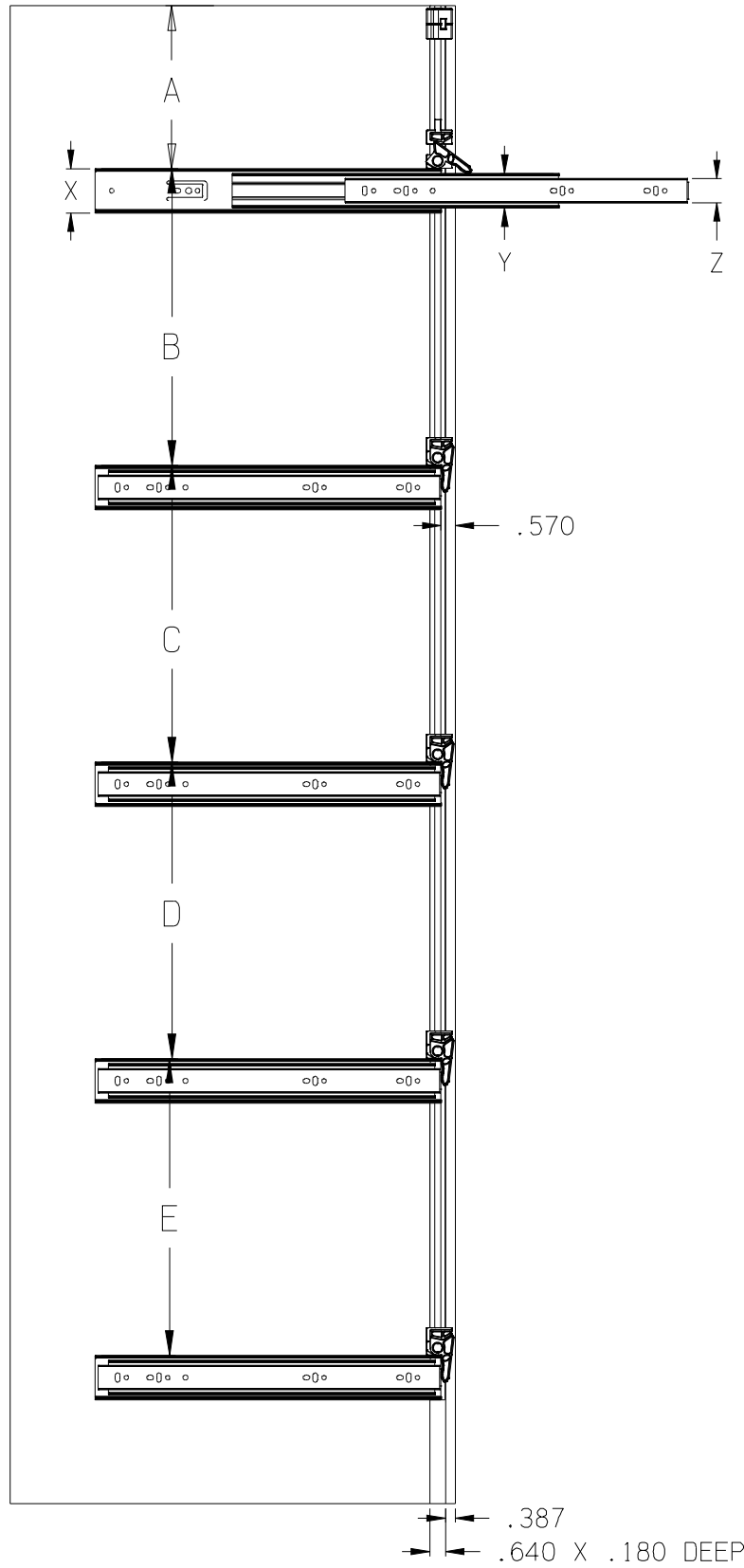
Contact

- For sales: John McLeod, johnm@weskolock.com
- For engineering: Tony Sabelli, tony@weskolock.com
- Tel. +1-905-629-3227

Wesko Patented Design

US Patent No. 10145149B2

A	
B	
C	
D	
E	
X	
Y	
Z	
SLIDE WIDTH	



US PATENT 10145149B2

TOLERANCES	
DECIMAL	ANGULAR
.X ± .030	± 30'
.XX ± .010	FRACTIONAL
.XXX ± .003	±
ALL DIMS. AND TOLS. PER ANSI Y14.5	

REV	DESCRIPTION	DATE
DRAWING DEVELOPMENT HISTORIC		
DESCRIPTION		
ANTI-TIP WORKSHEET		
BALL BEARING SLIDES		DATE 12/05/2022
DRAWN BY	SCALE	PART NUMBER
TS	.	.
		REV
		.

WESKO

WESKO LOCKS

APPENDIX B

SIDE MOUNT ANTI-TIP DRAWER SIZE CALCULATIONS

FOR TOP DRAWER ONLY

IN	1/16	DRAWER SIZE	TOP FILLER LENGTH	STANDARD FILLER QUANTITIES									
				INCH	0.688	0.813	1.000	1.250	1.500	1.750	2.000	4.000	
				MM	17.46	20.64	25.4	31.75	38.1	44.45	50.8	101.6	
3	2	3.313	-										
4	0	4.000	0.688	•									
	2	4.125	0.813		•								
	5	4.313	1.000			•							
	9	4.563	1.250				•						
	11	4.688	1.375	••									
	13	4.813	1.500	•	•								
5	0	5.000	1.688	•		•							
	1	5.063	1.750						•				
	2	5.125	1.813		•	•							
	4	5.250	1.938	•			•						
	5	5.313	2.000								•		
	6	5.375	2.063		•		•						
	8	5.500	2.188	•					•				
	9	5.563	2.250			•	•						
	10	5.625	2.313		•				•				
	11	5.688	2.375	••		•							
	12	5.750	2.438	•						•			
	13	5.813	2.500			•			•				
	14	5.875	2.563		•					•			
	15	5.938	2.625	••					•				
6	0	6.000	2.688	•							•		
	1	6.063	2.750			•				•			
	2	6.125	2.813		•						•		
	3	6.188	2.875	••						•			
	4	6.250	2.938	•		•	•						
	5	6.313	3.000			•					•		
	6	6.375	3.063		•	•	•						
	7	6.438	3.125	••						•			
	8	6.500	3.188	•		•			•				
	9	6.563	3.250				•				•		
	10	6.625	3.313		•	•			•				
	11	6.688	3.375	••							•		
	12	6.750	3.438	•		•				•			
	13	6.813	3.500						•		•		
	14	6.875	3.563		•	•				•			
	15	6.938	3.625	••		•	•						
7	0	7.000	3.688	•		•					•		
	1	7.063	3.750							•	•		
	2	7.125	3.813		•	•					•		
	3	7.188	3.875	••		•			•				

WESKO LOCKS

APPENDIX B

SIDE MOUNT ANTI-TIP DRAWER SIZE CALCULATIONS

FOR TOP DRAWER ONLY

IN	1/16	DRAWER SIZE	TOP FILLER LENGTH	STANDARD FILLER QUANTITIES								
				INCH	0.688	0.813	1.000	1.250	1.500	1.750	2.000	4.000
				MM	17.46	20.64	25.4	31.75	38.1	44.45	50.8	101.6
	4	7.250	3.938	•			•			•		
	5	7.313	4.000								•	
	6	7.375	4.063		•		•			•		
	7	7.438	4.125	••		•			•			
	8	7.500	4.188	•				•		•		
	9	7.563	4.250			•	•			•		
	10	7.625	4.313		•			•		•		
	11	7.688	4.375	••		•				•		
	12	7.750	4.438	•					•	•		
	13	7.813	4.500			•		•		•		
	14	7.875	4.563		•				•	•		
	15	7.938	4.625	••			•			•		
8	0	8.000	4.688	•							•	
	1	8.063	4.750			•			•	•		
	2	8.125	4.813		•						•	
	3	8.188	4.875	••				•		•		
	4	8.250	4.938	•		•	•			•		
	5	8.313	5.000			•					•	
	6	8.375	5.063		•	•	•			•		
	7	8.438	5.125	••					•	•		
	8	8.500	5.188	•		•		•		•		
	9	8.563	5.250				•				•	
	10	8.625	5.313		•	•		•		•		
	11	8.688	5.375	••							•	
	12	8.750	5.438	•		•			•	•		
	13	8.813	5.500					•			•	
	14	8.875	5.563		•	•			•	•		
	15	8.938	5.625	••		•	•			•		
9	0	9.000	5.688	•		•					•	
	1	9.063	5.750						•		•	
	2	9.125	5.813		•	•					•	
	3	9.188	5.875	••		•		•		•		
	4	9.250	5.938	•			•				•	
	5	9.313	6.000							•	•	
	6	9.375	6.063		•		•				•	
	7	9.438	6.125	••		•			•	•		
	8	9.500	6.188	•				•			•	
	9	9.563	6.250			•	•				•	
	10	9.625	6.313		•			•			•	
	11	9.688	6.375	••		•					•	
	12	9.750	6.438	•					•		•	

WESKO LOCKS

APPENDIX B

SIDE MOUNT ANTI-TIP DRAWER SIZE CALCULATIONS

FOR TOP DRAWER ONLY

IN	1/16	DRAWER SIZE	TOP FILLER LENGTH	STANDARD FILLER QUANTITIES							
				INCH	0.688	0.813	1.000	1.250	1.500	1.750	2.000
			MM	17.46	20.64	25.4	31.75	38.1	44.45	50.8	101.6
	13	9.813	6.500			•		•			•
	14	9.875	6.563		•				•		•
	15	9.938	6.625	••			•				•
10	0	10.000	6.688	•						•	•
	1	10.063	6.750			•			•		•
	2	10.125	6.813		•					•	•
	3	10.188	6.875	••				•			•
	4	10.250	6.938	•		•	•				•
	5	10.313	7.000			•				•	•
	6	10.375	7.063		•	•	•				•
	7	10.438	7.125	••					•		•
	8	10.500	7.188	•		•		•			•
	9	10.563	7.250				•			•	•
	10	10.625	7.313		•	•		•			•
	11	10.688	7.375	••						•	•
	12	10.750	7.438	•		•			•		•
	13	10.813	7.500					•		•	•
	14	10.875	7.563		•	•			•		•
	15	10.938	7.625	••		•	•				•
11	0	11.000	7.688	•		•				•	•

- TOP DRAWER FILLER LENGTH = TOP DRAWER HEIGHT - 3.3125"

WESKO LOCKS

SIDE MOUNT ANTI-TIP DRAWER SIZE CALCULATIONS

LOWER DRAWERS

IN	1/16	DRAWER SIZE	LOWER FILLER LENGTH	STANDARD FILLER QUANTITIES								
				INCH	0.6875	0.8125	1	1.25	1.5	1.75	2	4
				MM	17.46	20.64	25.4	31.75	38.1	44.45	50.8	101.6
3	8	3.500	1.938	•				•				
	12	3.750	2.188	•					•			
4	0	4.000	2.438	•						•		
	1	4.063	2.500				•			•		
	2	4.125	2.563			•				•		
	3	4.188	2.625	••				•				
	4	4.250	2.688	•							•	
	5	4.313	2.750	•		•		•				
	6	4.375	2.813			•					•	
	7	4.438	2.875	••					•			
	8	4.500	2.938	•			•	•				
	9	4.563	3.000	•		•			•			
	10	4.625	3.063			•	•	•				
	11	4.688	3.125	••						•		
	12	4.750	3.188	•			•		•			
	13	4.813	3.250	•		•				•		
	14	4.875	3.313			•	•		•			
	15	4.938	3.375	••							•	
5	0	5.000	3.438	•			•			•		
	1	5.063	3.500	•		•					•	
	2	5.125	3.563			•	•			•		
	3	5.188	3.625	••			•	•				
	4	5.250	3.688	•			•				•	
	5	5.313	3.750	•		•	•	•				
	6	5.375	3.813			•	•				•	
	7	5.438	3.875	••			•		•			
	8	5.500	3.938	•				•			•	
	9	5.563	4.000	•		•	•		•			
	10	5.625	4.063			•	•	•			•	
	11	5.688	4.125	••			•			•		
	12	5.750	4.188	•					•		•	
	13	5.813	4.250	•		•	•			•		
	14	5.875	4.313			•			•		•	
	15	5.938	4.375	••			•				•	
6	0	6.000	4.438	•						•	•	
	1	6.063	4.500	•		•	•				•	
	2	6.125	4.563			•				•	•	
	3	6.188	4.625	••				•			•	
	4	6.250	4.688	•								•
	5	6.313	4.750	•		•	•	•			•	
	6	6.375	4.813			•						•

SIDE MOUNT ANTI-TIP DRAWER SIZE CALCULATIONS

LOWER DRAWERS

IN	1/16	DRAWER SIZE	LOWER FILLER LENGTH	STANDARD FILLER QUANTITIES								
				INCH	0.6875	0.8125	1	1.25	1.5	1.75	2	4
				MM	17.46	20.64	25.4	31.75	38.1	44.45	50.8	101.6
9	0	9.000	7.438	•		•			•		•	
	1	9.063	7.500	•	•					•	•	
	2	9.125	7.563		•	•			•		•	
	3	9.188	7.625	••		•	•				•	
	4	9.250	7.688	•		•				•	•	
	5	9.313	7.750	•	•	•	•				•	
	6	9.375	7.813		•	•				•	•	
	7	9.438	7.875	••		•		•			•	
	8	9.500	7.938	•			•			•	•	
	9	9.563	8.000	•	•	•		•			•	
	10	9.625	8.063		•		•			•	•	
	11	9.688	8.125	••		•			•		•	
	12	9.750	8.188	•				•		•	•	
	13	9.813	8.250	•	•	•			•		•	
	14	9.875	8.313		•			•		•	•	
	15	9.938	8.375	••		•				•	•	
10	0	10.000	8.438	•					•	•	•	
	1	10.063	8.500	•	•		•		•		•	
	2	10.125	8.563		•				•	•	•	
	3	10.188	8.625	••				•	•		•	
	4	10.250	8.688	•							••	
	5	10.313	8.750	•	•		•			•	•	
	6	10.375	8.813		•						••	
	7	10.438	8.875	••				•		•	•	
	8	10.500	8.938	•		•	•			•	•	
	9	10.563	9.000	•	•			•		•	•	
	10	10.625	9.063		•	•	•			•	•	
	11	10.688	9.125	••					•	•	•	
	12	10.750	9.188	•		•		•		•	•	
	13	10.813	9.250	•	•				•	•	•	
	14	10.875	9.313		•	•		•		•	•	
	15	10.938	9.375	••							••	
11	0	11.000	9.438	•		•			•	•	•	

- LOWER DRAWER FILLER LENGTH = TOP DRAWER HEIGHT - 1.5625"

**WESKO LOCKS
SIDE MOUNT ANTI-TIP COMPONENT PARTS**

APPENDIX D

EXTRUSIONS

PART #	DESCRIPTION
AT-SM-49	50" C-CHANNEL - 5 DRAWER
AT-SM-48	40" C-CHANNEL - 4 DRAWER
AT-SM-47	30" C-CHANNEL - 3 DRAWERS
TBD	20" C-CHANNEL - 2 DRAWERS

PARTS

PART #	DESCRIPTION
AT-SPRING	ANTI-TIP SPRING
AIO-PLAS-WESKO-1C	PLASTIC SPRING BLOCK
AIO-PLAS-WESKO-2C	PLASTIC FOLLOWER
AIO-PLAS-WESKO-3C	PLASTIC SWIVEL ASSEMBLY
AT500-CM-5	BOTTOM BLOCK