

HARDSTOP™ DECORATIVE PROTECTION PANELS BY FORMICA GROUP



TECHNICAL GUIDE, USE & CARE, WARRANTY, AND INSTALLATION GUIDE

INTRODUCTION

HardStop™ Decorative Protection Panels by Formica Group offer an excellent solution for high-performance wall panels by blending ease of installation and impact resistance with a full range of design selections that coordinate perfectly with other Formica® laminates.

Unlike traditional laminate that contains a paper core, HardStop™ Panels feature a treated fiberglass core for added durability, strength, and fire resistance. HardStop™ Panels are Class A fire-rated.

HardStop™ Decorative Protection Panels are intended for commercial applications. They can be used in the following applications, provided installation instructions are strictly followed:

- Walls/Partitions/Wainscoting
- Backsplash
- Doors, cabinet fronts, transactional counter fronts
- Counters or table tops, etc.

SAFETY

Refer to HardStop™ Decorative Protection Panels SDS for additional safety information.

HardStop™ Panels must be installed by a qualified professional. Professionals should follow all building codes and safety, personal protection equipment, and fire guidelines for installation.

Product contains fiberglass which could cause temporary mechanical irritation (itching) of skin, eyes and respiratory tract upon exposure to dust/particles during cutting, drilling or machining.

- Always wear a dust mask, protective clothing, and eye protection when cutting, drilling or machining HardStop™ Panels. Use hearing protection as needed for power tools.
- Clear area of occupants and ensure only properly outfitted installers are present during installation.
- Area should be well ventilated.
- Clean up all dust.

During fabrication, assure good ventilation conditions are in place. Ventilation rates should be matched to conditions. If applicable, use engineering controls such as local exhaust to maintain airborne dust levels below recommended OSHA exposure limits for nuisance dust. Avoid dust accumulation.

If you are unsure about how to comply with OSHA fiberglass dust regulations, consult a qualified industrial hygienist or safety professional. Formica Group makes no representation or warranty that adopting a particular cutting practice will assure your compliance with OSHA guidelines or other applicable laws and safety requirements.

If using any materials for this installation that are not made by Formica Group, such as adhesives, you must follow the manufacturer's instructions for safety.

INSPECTION

Inspect all materials at the time they are received to ensure all panels and trim are free from damage and/or visible defects. HardStop™ Panels are two-sided. If one side has visible defects the other side may be used. Do not install materials with known defects on both sides. It is the responsibility of the customer/fabricator/installer to inspect materials before installation.

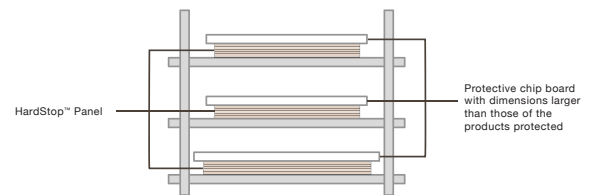
STORAGE CONDITIONS

Place all panels on a flat, dry surface (never directly on the floor or directly on concrete). The optimal conditions for acclimation and storage are 50 – 90°F (10-32°C) and 30% – 65% humidity.

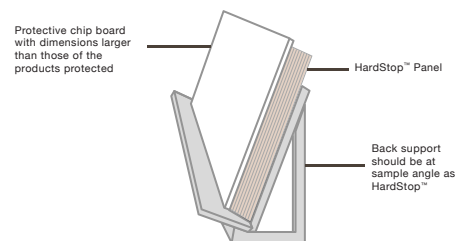
ACCLIMATION CONDITIONS

All HardStop™ Panels need to acclimate a minimum of 24 hours prior to installation. To do this, store the panels indoors in the area where the installation will occur. Place all panels on a flat, dry surface (never directly on the floor or directly on concrete), and remove all packing materials. The optimal conditions for acclimation and storage are 50 – 90°F (10-32°C) and 30% – 65% humidity.

Two recommended methods for storage or acclimation:



Or



INSTALLATION CONDITIONS

HardStop™ Panels and all substrate surfaces must be dry/cured, clean and free of all grease, dust, and foreign matter. All surfaces must be kept indoors, and the area should be environmentally controlled. It is desirable that the product is installed when the HVAC system is operating in the building or room, with temperatures between 50 – 90°F (10-32°C). The humidity should be between 30 - 65%.

HARDSTOP™ DECORATIVE PROTECTION PANELS BY FORMICA GROUP



TECHNICAL GUIDE, USE & CARE, WARRANTY, AND INSTALLATION GUIDE

HARDSTOP™ PANELS MAY BE APPLIED TO:

1. Painted drywall and gypsum board
2. Non-painted drywall and gypsum board
3. Plywood
4. Above grade brick and concrete block
5. Above grade poured concrete
6. MDF or particleboard
7. Inorganic reinforced cement board, also referred to as IRCB or HardieBacker®
8. Non-porous material such as tile, metal.

Only approved if recommended application methods in this document are followed.

SURFACES PREPARATION AND INSTALLATION REQUIREMENTS:

All surfaces must be flat and free of any loose debris that may keep the adhesive from bonding properly. Surfaces must be dry, fully cured and free of any contaminants. Any glossy, epoxy coated painted surface must be roughed up with course 100 grit sandpaper (or wallpaper surface perforating tool) and then completely cleaned. Always ensure that the drywall has been installed and finished to industry standards. Refer to the “Approved Adhesives Chart” below for adhesive requirements by surface type.

PAINTED DRYWALL AND GYPSUM BOARD:

The surface must be flat. All glossy, epoxy coated painted surfaces must be roughed up with coarse 100 grit sandpaper to ensure the exposure of clean drywall. You may also use a wallpaper surface perforating tool. Be sure to clean the surface after abrading to remove all loose particulates and dirt and use the recommended adhesive. Be careful not to abrade through the drywall’s face paper; only rough up the painted or primed surface to expose the drywall surface paper.

NON-PAINTED DRYWALL AND GYPSUM BOARD:

The surface must be flat. Finish only the tapered joints and corners so they are flat. Do not finish, prime or paint the entire surface of new drywall or gypsum. If the area needs to be evened out, you may use joint compound. Any high or low spots will create a poorly finished wall and yield a poor bond. Make sure all dust and particulates are removed when finished. All drywall seams and corners must be primed. We recommend the use of Titebond® Original Wood Glue, thinned with 50% water, to be used as a primer.

PLYWOOD SURFACES:

Standard plywood may be used, provided it is flat, dry and free of any loose debris and contaminants. Glossy, epoxy coated painted plywood needs to be roughed up before application and then completely cleaned. Treated and fire-rated plywood may be used, however proper adhesives must be used. See “Approved Adhesives Chart” below.

ABOVE GRADE BRICK OR CONCRETE BLOCK:

You may opt for one of the following installation techniques:

1. For the best and smoothest covering to a brick or block wall, the brick or block wall should be furred out with furring strips or studs and covered with drywall, gypsum board or cement board. Smooth the joints with the appropriate material, then install HardStop™ Panels per the instructions in this document.
2. If you are working with a flat, unpainted (or roughed-up painted), clean, and above-grade brick or concrete block, adhesive may be used. Acceptable adhesives outlined in the “Approved Adhesives Chart” must be used. Formica Group requires that all brick or concrete block have all moisture dissipated prior to installing. The space must remain dry and free of moisture penetration for the life of the installation.

ABOVE GRADE Poured CONCRETE:

For the best and smoothest covering to poured concrete, wall should be furred out with furring strips or studs and covered with drywall, gypsum board or cement board. Smooth the joints with the appropriate material, then install HardStop™ Panels per the instructions in this document. Formica Group requires that all brick or concrete block have all moisture dissipated prior to installing. The space must remain dry and free of moisture penetration for the life of the installation.

NON-POROUS SURFACES:

In general, metal, ceramic tile, stainless steel or other non-porous material may be used. Reference “Approved Adhesives Chart” below.

MDF OR PARTICLEBOARD:

Reference “Approved Adhesives Chart” below.

INORGANIC REINFORCED CEMENT BOARD, ALSO REFERRED TO AS IRCB OR HARDIEBACKER®:

Reference “Approved Adhesives Chart” below.

HIGH-HUMIDITY AND HIGH/LOW TEMPERATURE CONDITIONS:

- Follow all parameters for expansion gaps.
- Use the adhesive and trowel recommended for the conditions (humidity and temperature). Formica Group recommends that installers follow the manufacturer’s instructions for adhesive application and clean-up.
- Make sure all moisture entry points are sealed with silicone sealant to avoid the potential for product or substrate deterioration.
- HardStop™ Panels are not recommended for applications where it will be exposed to lower than 50°F or higher than 90°F. It is also not recommended for application areas below 30% or above 65% humidity.
- NOTE: Commercial kitchens and bathrooms are not considered high humidity.

HARDSTOP™ DECORATIVE PROTECTION PANELS BY FORMICA GROUP



TECHNICAL GUIDE, USE & CARE, WARRANTY, AND INSTALLATION GUIDE

TOOLS & MATERIALS NEEDED:

- HardStop™ Decorative Protection Panels by Formica Group
- Adhesive appropriate for application type
- One or more of the below cutting tools. Blades/bits should be carbide or diamond tip. Reference chart below.
- Circular saw with a carbide blade that has 7 inch diameter blade and 58 teeth (Amana # 575601) or equivalent tool
- Jigsaw with a fine tooth blade
- Router for outlets
- Drill
- ¼" (6.35mm) and ½" (12.7mm) twist drill bit
- Screw gun
- Trowel that is specified by the adhesive manufacturer being used
- Extendable hand roller
- Measuring tape
- Straight edge
- Level
- Suction cups (if needed to position the panels on the wall)
- Drywall screws
- Blue painter's tape (if needed for protection or positioning)
- Chalk line (if needed for making measurements)
- 100 grit sand paper (if needed for painted or primed substrate)
- A table or work surface
- Cleaning cloths
- Cleaner such as acetone, mineral spirits, or solvent recommended by adhesive manufacturer to remove any dried adhesive
- Personal Protective Equipment (PPE), consult SDS for full list, examples:
 - Dust mask
 - Eye protection
 - Protective clothing
 - Hearing protection as needed
 - Ventilation and/or dust collection equipment as needed

IF TRIM IS BEING INSTALLED, THE FOLLOWING IS ALSO NEEDED:

- HardStop™ Trim or trim by another manufacturer designed to fit a max material thickness of 0.0827" (or 2.1mm material)*
 - * Depending on design selected, HardStop™ Panels can range from 0.0669" – 0.0827" (or 1.70mm – 2.10mm)
- Pneumatic nail gun
- 16-18 gauge nails, 1" long (25.4mm)
- 100% clear silicone caulk and a caulk gun
- Miter box
- Appropriate cutting tool for aluminum, such as circular or miter saw with an appropriate aluminum cutting blade. Metal snips may also be used, though the edge may not be as clean.
- If Trim is not being used, 100% silicone caulk will be needed.
- Silicone caulk with a good color selection can be purchased through Color Rite™, Inc.
- Formica Group still recommends covering outside corners with molding.

HARDSTOP™ DECORATIVE PROTECTION PANELS BY FORMICA GROUP



TECHNICAL GUIDE, USE & CARE, WARRANTY, AND INSTALLATION GUIDE

CNC/ROUTER BIT REFERENCE CHARTS

AMANA TOOLS® (OR EQUIVALENT MAY BE USED) — SEE AMANA TOOL SPECIFIC FEED AND ROTATION SPEEDS FOR EACH BIT:

Amana bit number	Direction	Cutter diameter	Cutter height	Shank diameter	Overall length	Flutes	Bit Material
51458	up cut	1/4	7/8	1/4	2 1/2	1	solid carbide
51480	up cut	1/4	3/4	1/4	2 1/2	1	solid carbide
51481	up cut	1/4	1 1/4	1/4	3	1	solid carbide
51484	up cut	3/8	3/4	3/8	3	1	solid carbide
51485	up cut	3/8	1 1/8	3/8	3	1	solid carbide
51487	up cut	1/2	1 1/8	1/2	3 1/2	1	solid carbide
51775	down cut	1/4	3/4	1/4	2 1/2	1	solid carbide
51776	down cut	1/4	1 1/4	1/4	3	1	solid carbide

BLADE REFERENCE CHARTS

AMANA TOOLS® (OR EQUIVALENT MAY BE USED)

(D) Diameter	Teeth	Tooth Grind	Hook Angle	Kerf (B)	Plate (C)	(d) Bore	Pinholes	Tool Number
7 (180mm)	58	TCG	-6°	.110 (2.8mm)	.087 (2.2mm)	5/8 inch	—	575601
8 (200mm)	64	TCG	-6°	.110 (2.8mm)	.087 (2.2mm)	5/8 inch	—	586401
9 (230mm)	60	TCG	-6°	.110 (2.8mm)	.087 (2.2mm)	5/8 inch	—	596001
10 (250mm)	100	TCG	-6°	.126 (3.2mm)	.102 (2.6mm)	1 inch	—	510101
10 (250mm)	80	TCG	-6°	.126 (3.2mm)	.102 (2.6mm)	1 inch	—	510801
12	96	TCG	-6°	.126 (3.2mm)	.102 (2.6mm)	1 inch	—	512961
10 (250mm)	80	TCG	-6°	.126 (3.2mm)	.102 (2.6mm)	30 mm	2/7/42, 2/9/46 & 2/10/60	510801-30
12 (300mm)	96	TCG	-6°	.126 (3.2mm)	.102 (2.6mm)	30 mm	2/7/42, 2/9/46 & 2/10/60	512961-30
14 (350mm)	108	TCG	-6°	.126 (3.2mm)	.102 (2.6mm)	1 inch	—	514108
14 (350mm)	108	TCG	-6°	.126 (3.2mm)	.102 (2.6mm)	30 mm	2/7/42, 2/9/46 & 2/10/60	514108-30
16 (400mm)	120	TCG	-6°	.150 (3.8mm)	.126 (3.2mm)	1 inch	—	516121
18 (450mm)	120	TCG	-6°	.150 (3.8mm)	.126 (3.2mm)	1 inch	—	518121
20 (500mm)	120	TCG	-6°	.174 (4.4mm)	.134 (3.4mm)	1 inch	—	520121
160mm	56	TCG	-5	2.5mm	1.8mm	20mm		MD160-565
210mm	72	TCG	-5	2.4mm	1.8mm	30mm		MD210-725
260mm	68	TCG	-5	2.4mm	1.8mm	30mm		MD260-685

HARDSTOP™ DECORATIVE PROTECTION PANELS BY FORMICA GROUP

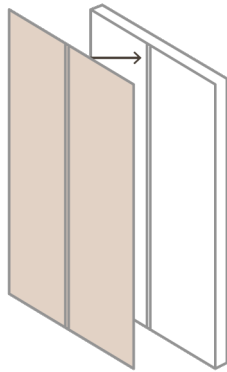


TECHNICAL GUIDE, USE & CARE, WARRANTY, AND INSTALLATION GUIDE

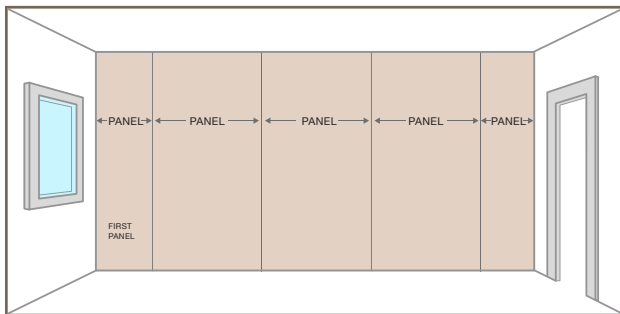
IMPORTANT INSTALLATION TIPS & REMINDERS:

- You will need a work area with a large surface to support one full HardStop™ Panel flat while you cut the material and apply the adhesive.
- Use PPE whenever cutting or drilling panels.
- Have clean water, cleaner and rags on hand for cleanup. (Follow the adhesive manufacturer's recommendations for cleanup.)
- If the wall is painted, sand to rough up the surface and then completely clean the surface.
- All areas with drywall seams and corners must be sealed or primed prior to applying panels.
- Do not position HardStop™ Panel joints directly over substrate joints.
- If using caulk, you must also leave $\frac{1}{8}$ " (or 3.175mm) gap between panels and panels/obstructions.
- Remember that all inside corners need to cut on to $\frac{1}{8}$ " (or 3.175mm) minimum radius.
- Always check adhesion by applying your chosen adhesive to a test area.

DO NOT position HardStop™ Panel joints directly over substrate joints.



- Do not install HardStop™ Panels directly to wall studs.
- A balanced look is important and should be a goal of installation. Always start with a center line measurement to ensure a balanced installation.



- Do not nail through the HardStop™ Panels.
- There should be no raw edge exposed. All edges of every panel should have trim, silicone caulk, or Color Rite, Inc. silicone caulk covering them.
- Remember to leave a $\frac{1}{8}$ " (or 3.175mm) gap between the trim/obstructions and the HardStop™ Panels.

HARDSTOP™ DECORATIVE PROTECTION PANELS BY FORMICA GROUP



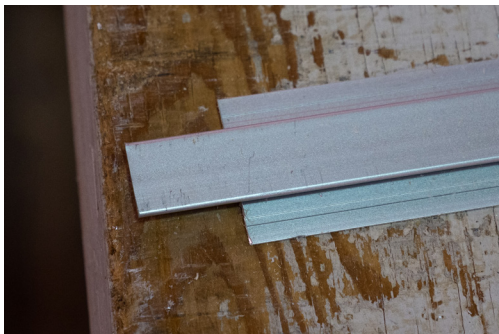
TECHNICAL GUIDE, USE & CARE, WARRANTY, AND INSTALLATION GUIDE

BASIC INSTALLATION STEPS FOR WAINSCOT DRYWALL INSTALLATION

1. While planning your install, consider the panel seams must be offset from the substrate joints. Plan for symmetry of your panels along your wall line.
2. Put on personal protective equipment (PPE).
3. Establish wall level line.
4. Cut trim to size. Miter corners and notch backs as needed.



Cut trim & miter corners



Division Bar with a notched back

5. Install top edge trim to wall using silicone.



Use 100% clear silicone to adhere trim

6. Use the nailer to put nails into bottom flange of trim.



16-18 gauge 1" nails used to hold trim

7. You may place painters tape on any trim edge joints while drying.

8. Cut the panel to fit.



Cut panel

9. Dry fit panel to confirm it is plumb and level.

10. Mark any areas on panel where there will be cutouts (i.e. outlets).

11. Clean wall.

12. Apply adhesive with adhesive manufacturer's recommended trowel to backside of panel. HardStop™ Panels require 100% adhesive coverage on back of the panel only.



Apply adhesive. 100% adhesive coverage required.

HARDSTOP™ DECORATIVE PROTECTION PANELS BY FORMICA GROUP



TECHNICAL GUIDE, USE & CARE, WARRANTY, AND INSTALLATION GUIDE

13. Install the panel by positioning it into the trim. Remember leave $\frac{1}{8}$ " (or 3.175mm) gaps.



Insert panel into trim

14. Confirm panel and trim are plumb. Adjust if needed. Suction cups can help with positioning.
15. Install drywall screws through bottom of panel (in a location where baseboard will eventually hide) to support the panel until the adhesive dries. Oversize holes are recommended whenever screwing into the panel.
16. Use extendable hand roller (with 3 roller heads) across the entire panel to ensure a good bond. Roll from the center out to remove any air bubbles. Do not over press.



Use extendable hand roller

17. Clean excess adhesive per adhesive manufacturer's instructions.
18. Install the next trim piece.



Install next trim

19. Install all panels and trim pieces as you move in one direction around the perimeter of the room. Use roller after each panel is installed. Make sure to clean adhesive as you go. Continue to support panels with drywall screws.

20. Once all panels are installed, cut out all other openings for outlets, etc.
- Drill a single hole ($\frac{1}{2}$ " or 12.7mm diameter) into the center of the outlet area and then route the entire opening with a $\frac{1}{4}$ " (6.35mm) flush trim router bit.
 - Make sure all electrical devices are not energized when cutting openings for them.
 - Opening must have $\frac{1}{8}$ " (or 3.175mm) minimum inside radius.
21. After adhesive is dry, remove the temporary drywall screws and apply baseboard following the baseboard manufacturer's instructions.

CUTTING TIPS:

- To reduce the potential for chipping, always cut the HardStop™ Panels with the backside up when using a circular saw.
- All inside corners (i.e. for outlets) must be cut with a minimum radius of $\frac{1}{8}$ " (or 3.175mm).
- Whenever drilling into HardStop™ Panels, use oversized holes.
- A twist drill bit will work, allow for some type of low profile washer head screws or an escutcheon to cover the drilled hole.

TRIM TIPS:

- 100% clear silicone caulk should be applied to back flange of all trim.
- For best bonding, use nails to secure back flange of trim to wall.
- At joints, miter cuts should be used.
- Whenever joining vertical and horizontal trim pieces, notch the back of the vertical trim so they sit flush.
- You may put 100% clear silicone caulk in inside of trim piece to further seal (i.e. in locations that require sanitary conditions).

HARDSTOP™ DECORATIVE PROTECTION PANELS BY FORMICA GROUP



TECHNICAL GUIDE, USE & CARE, WARRANTY, AND INSTALLATION GUIDE

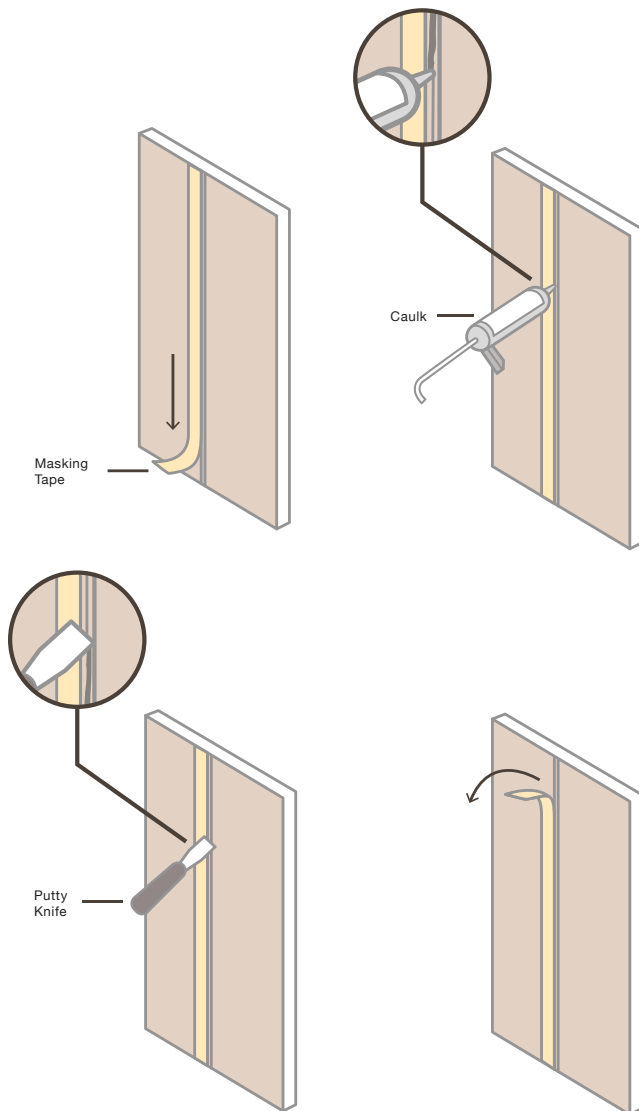
CAULK TIPS:

Caulk may be used in place of trim, however, Formica Group does recommend the use of molding for any outside corner.

When using caulk, leave a $\frac{1}{8}$ " (or 3.175mm) gap for expansion at the joints at the top, bottom, and edges of the sheet.

Select a silicone caulk that matches the panels (Color Rite™, Inc. offers many color options.

- Apply painters tape along the edges of the gap in between the panels.
- Apply a $\frac{1}{8}$ " (or 3.175mm) bead of caulk in the gap. Be sure the joint is completely filled.
- Remove any excess caulk immediately. The caulk should be flush to the panel.
- Remove the painters tape.
- Clean any caulk that is on the face of the panel immediately.



USE OF EDGE BANDING FOR HORIZONTAL APPLICATION:

HardStop™ Panels can be edge banded.

USE OF BUMPERS OR HANDRAILS:

Bumpers, crash rails, or handrails may be installed into HardStop™ Panels.

- Follow the bumper, crash rail, and handrail manufacturer instructions to ensure a safe installation. Formica Group makes no representation or warranty that adopting a particular installation practice will assure your compliance to applicable laws and safety requirements.
- Be sure all attachments allow for panel movement.

APPROVED ADHESIVES FOR INSTALLING HARDSTOP™ PANELS TO VARIOUS SUBSTRATES:

All adhesives should be tested by installer on-site to ensure desired adhesion is achieved.

Please refer to hot/cold panel section of guide for approved adhesive for this install method.

Glued To	Titebond® GREENChoice™ Advanced Polymer Panel Adhesive
standard unpainted drywall	YES
standard painted drywall (sanded)	YES
mold & moisture resistant drywall	YES
standard unpainted plywood	YES
standard painted plywood (sanded)	YES
treated plywood	YES
fire-rated plywood	YES
uncoated MDF	YES
uncoated particleboard	YES
cement board**	YES
firecode core drywall	YES
DensGlass and fiberglass faced wallboard	YES
ceramic tile	YES
stainless steel	YES
metal	YES
aluminum	YES
galvanized metal	YES
brick or cement block (above grade, or inside wall)**	YES
brick or cement block (above grade, or outside wall)**	YES

HARDSTOP™ DECORATIVE PROTECTION PANELS BY FORMICA GROUP



TECHNICAL GUIDE, USE & CARE, WARRANTY, AND INSTALLATION GUIDE

USE OF HOT OR COLD PRESS FOR PANEL MANUFACTURING:

Before hot or cold pressing, always do a test panel to confirm results.

Franklin Adhesives Advantage EP-950A (with Hardener 200) is recommended for use with MDF, plywood, particle board, fire rated particle board and fire rated MDF (i.e. Medite® FR) substrates in both hot and cold panel press operations.

- Cold Press Conditions – 50-75 psi for 60 minutes at 70°F or 21°C (8 wet mil adhesive spread)
- Hot Press Conditions – 50-75 psi for 2 minutes at 200°F or 93°C (8 wet mil adhesive spread)

Caution: panels will come out hot and remain hot for a few minutes after pressing because of the core.

PHYSICAL PROPERTIES OF HARDSTOP™ DECORATIVE PROTECTION PANELS:

PHYSICAL PROPERTIES	TEST	HARDSTOP™ PANELS
	NEMA LD3 2005	
Light Resistance	3.3	No effect
Cleanability	3.4	14
Stain Resistance	3.4	
Reagents 1-10		No effect
Reagents 11-15		No effect
Boiling Water Resistance	3.5	No effect
High Temperature Resistance	3.6	No effect
Ball Impact Resistance	3.8	
-in		53
-mm		1350
Radiant Heat Resistance Coil Method	3.1	>600 sec.
Coil Method		
Room Temp. Dimensional Change	3.12	
Machine Direction - %		0.05%
Cross Direction - %		0.05%
Wear Resistance - cycles	3.13	700

PHYSICAL PROPERTIES	TEST	HARDSTOP™ PANELS
Water Absorption	ASTM D570	1.78%
Thermal Expansion	ASTM D696	2.0 x 10 ⁻⁵ /°C
Barcol Hardness	ASTM D2583	72
Anti-bacterial	ASTM G22	Pass
Chemical Resistance	SEFA 8.1	Pass

FIRE RESISTANT PROPERTIES	TEST	HARDSTOP™ PANELS
Steiner Tunnel Test	Class ASTM E84 UL723 ULC 102	Flame Smoke 0 40 0 70-95 0 40
Surface Flammability	ASTM E162	1
Smoke Density	ASTM E662	Flamming Ds(1.5) 9 Flamming Ds(4.0) 31 Non-Flamming Ds(1.5) 0 Non-Flamming Ds(4.0) 9
Federal Motor Vehicle Safety	FMVSS 302	Pass
Cone Calorimeter	ISO 5660	Peak HRR 20 kW/m ² Total Smoke 112 m ² /m ² Average THR 11.5 MJ/m ² THR 5 min 0.8 MJ/m ² THR 10 min 5.0 MJ/m ² THR 20 min 11.5 MJ/m ²

MECHANICAL PROPERTIES	ASTM TEST	HARDSTOP™ PANELS
Flexural Strength	D790	
Ultimate	Machine Direction Cross Direction	110 MPa 90 MPa
Modulus	Machine Direction Cross Direction	10,000 MPa 9,000 MPa

Codes & Certifications	
Greenguard Gold	Approved

HARDSTOP™ DECORATIVE PROTECTION PANELS BY FORMICA GROUP



TECHNICAL GUIDE, USE & CARE, WARRANTY, AND INSTALLATION GUIDE

LIMITATIONS

Product should be installed in environments that are regulated between 50 – 90°F (10-32°C) and 30-65% humidity.

SIZES, THICKNESS & WEIGHT

SIZES:

Sheet width 48" (1,219mm)

Sheet length 96" (2,438mm) or 120" (3,048mm)

THICKNESS:

Grade H1: Can range from 0.0669"—0.0827" (or 1.70mm—2.10mm)

WEIGHT:

Approximately 0.739 lbs. per square foot

Weight can vary slightly based on decor pattern selected.

TO ORDER SAMPLES:

Please call U.S. 1-800-FORMICA™ (option 1)
or Canada: 1-800-363-1405 for ZIP-CHIP™ service.

HardStop™ Panels can be purchased in any of the Formica® Brand colors. HardStop™ panels coordinate perfectly with Formica® Brand Laminate products. To select colors for HardStop™ panels, Formica® high pressure laminate samples should be used.

HOW TO SPECIFY

COLOR NUMBER _____

COLOR NAME _____

GRADE H1 _____

FINISH 58 Matte (-43 Artisan™ available on select colors) _____

SIZE 408 or 410 _____

HardStop™ Decorative Protection Panel 3 Part Spec document can be found on www.formica.com.

PROTECTING THE SURFACE

Before selecting the design, consider the type of use it will receive, as well as its color and reflective values. Dark colors tend to enhance scratches, marring and fingerprints.

SCRATCH AND IMPACT PROTECTION:

HardStop™ Panels are resistant to scratches and impacts under normal use and cleaning conditions.

- Do not hammer on any HardStop™ surface. Heavy blows from a hammer may crack or gouge the surface.
- Sharp or abrasive objects and unglazed ceramics materials may slice, scratch or cause premature wear on the surface.
- Abrasive pads, scouring powders or cleaners may permanently dull and scratch the decorative surface.

HOT OBJECTS:

- Hot objects, such as irons, hot appliances, cigarettes, etc. should not be placed directly on panel surfaces.
- If being used in a horizontal application, be aware that prolonged exposure to temperatures of 140°F (60°C) or higher may cause damage to the surface. Always use a protective device beneath all hot cookware, heat generating appliances, or other heated objects. The surface material can withstand heat up to 275°F (135°C) for short periods of time.

ORDINARY CLEANING:

HardStop™ Panels are very easy to clean.

- In most cases, you only need to use a clean, damp, nonabrasive cotton cloth and a mild liquid detergent or household cleaner.
- Rinse with clean water, using a clean, non-abrasive cotton cloth.
- Dry the surface with a soft, clean, non-abrasive cotton cloth.
- HardStop™ Aluminum Trim may not be cleaned with high pH cleaners, such as 409®, Simple Green®, or Fantastik®, as this could dull the coloration.
- Hardstop can be sterilized using isopropyl rubbing alcohol or ammonium chloride cleaners such as PDI wipes.

Hard-to-clean areas may require special attention. Use a soft nylon bristled hand or vegetable brush, along with a mild liquid detergent-and-water solution or household cleaner. Clean the soiled area using a rotating motion. Rinse and dry the surface as indicated above.

To remove any leftover/dried adhesive from installation, cleaner such as acetone, mineral spirits, or solvent recommended by adhesive manufacturer may be used.

HardStop™ Panels may not be sanitized using the UV sanitization method. UV exposure can damage or fade the surface.

HARDSTOP™ DECORATIVE PROTECTION PANELS BY FORMICA GROUP



TECHNICAL GUIDE, USE & CARE, WARRANTY, AND INSTALLATION GUIDE

CHEMICAL DAMAGE:

Never use cleaners containing acid, alkali, or sodium hypochlorite. These cleaners will mar, etch, corrode, and may permanently discolor the decorative surface. Also, make sure that bottles, rags, and other materials contaminated with these cleaners never contact the surface. Accidental spills or splatters from these compounds should be wiped off immediately, and the area rinsed thoroughly with water.

Examples of cleaners containing acid, alkali, or sodium hypochlorite include, but are not limited to:

- ceramic cooktop cleaners
- oven cleaners
- chlorine bleach
- rust removers
- coffeepot cleaners
- some countertop cleaners
- drain cleaners
- some disinfectants
- lime scale removers
- toilet bowl cleaners
- metal cleaners
- tub and tile cleaners

SPECIAL CLEANING RECOMMENDATIONS FOR RESIDUAL GLUE:

Sometimes new panels may have a streaky appearance caused by adhesive used during fabrication. Clean with a non-abrasive cotton cloth and an adhesive solvent such as acetone. Use solvent sparingly, as excessive amounts may deteriorate the adhesive at the edges. Read and follow all warnings and instructions on the labels of all solvent products.

SPECIAL CLEANING RECOMMENDATIONS FOR PAINT AND VARNISH:

Remove most oil-based paints, varnishes and lacquers from the decorative surface with a suitable solvent. Read and follow all warnings and instructions on the labels of all solvent products, and remember that most solvents are extremely flammable and could deteriorate adhesive at the edges. Remove most water-based paints with an ammoniated household cleaner. For stubborn paint spots, gently use a plastic, non-metallic, non-abrasive pad. Never use steel wool or other abrasive scouring pads.

SPECIAL CLEANING RECOMMENDATIONS FOR STAINS:

To remove or minimize stains, use full strength Fantastik® All Purpose Cleaner, Formula 409®, Pine-Sol® (original formulation) or other mild household cleaner on the affected area, and allow it to draw out the stain. If using a cleaner with high pH to remove tough stains, be sure not to let it touch HardStop™ aluminum trim (this includes Fantastik®, 409® or Simple Green as they will dull the

color). Blot with a clean, damp, non-abrasive cotton cloth, and then rinse with clean water. When a recommended cleaner changes its formulation, the change may be harmful to the decorative surface. Formica Group cannot be held responsible for these changes. Solvents such as denatured alcohol can also be used. Follow all directions and warnings on the solvent label because many are extremely flammable.

Stubborn or “fugitive” stains that may disappear on their own, after a short time or after repeated cleanings include:

- coffee and tea stains
- food stains
- fingerprints
- glass rings
- food dyes
- water marks

Stains which are stubborn or even permanent, and may not disappear include:

- cash register inks
- lemon juice
- food pricing ink
- marking pen inks
- indelible inks
- newsprint
- label inks
- wood stains

Some materials and liquids, such as dyes and pharmaceutical products, will permanently stain the HardStop™ Panels. Examples include:

- dermatological ointment/cream
- povidone-iodine
- hair dyes and rinses
- Red-2B dye
- laundry bluing
- silver nitrate
- Mercurochrome®
- tannic acid
- peroxides
- tar compounds

These stains may be reduced by applying a paste of baking soda and water on the area to pull out the stain. The paste will be slightly abrasive, so do not rub. Wipe up the paste with a clean, damp, non-abrasive cotton cloth, and then rinse clean with water.

Abrasive pads, scouring powders or cleaners may permanently dull and scratch the decorative surface making it susceptible to staining.

Periodic application of a self-cleaning wax can help minimize future staining.

HARDSTOP™ DECORATIVE PROTECTION PANELS BY FORMICA GROUP



TECHNICAL GUIDE, USE & CARE, WARRANTY, AND INSTALLATION GUIDE

LIMITED WARRANTY

Formica Corporation expressly warrants that, for a period of (1) one year from the date of first sale, this product will be reasonably free of defects in materials and workmanship, and that when properly stored, handled, fabricated and installed, will conform, within accepted tolerance, to applicable manufacturing specifications. Colors are subject to dye lot variations. DUE TO THE VARIETY OF USES AND APPLICATIONS TO WHICH HARDSTOP™ PANELS MAY BE PUT, FORMICA CORPORATION MAKES NO WARRANTY THAT THIS PRODUCT IS SUITABLE FOR ANY PARTICULAR PURPOSE AND MAKES NO OTHER WARRANTIES, EXPRESSED OR IMPLIED, OTHER THAN THOSE SET FORTH ABOVE.

DISCLAIMER OF WARRANTIES:

THE WARRANTIES SET FORTH HEREIN OR IN FORMICA CORPORATION'S WARRANTY DOCUMENTS WITH RESPECT TO A PRODUCT ARE THE ONLY WARRANTIES MADE BY FORMICA CORPORATION IN CONNECTION WITH THESE PRODUCTS, AND ARE EXPRESSLY IN LIEU OF ANY OTHER WARRANTIES, EXPRESS OR IMPLIED, INCLUDING WITHOUT LIMITATION, ANY WARRANTY OF MERCHANTABILITY OR FITNESS FOR A PARTICULAR PURPOSE. PRODUCTS SOLD BY FORMICA CORPORATION ARE SUBJECT ONLY TO THE WRITTEN SPECIFICATION. FORMICA CORPORATION'S SOLE OBLIGATION FOR A REMEDY TO BUYER SHALL BE, REPAIR OR REPLACEMENT TO NON-CONFORMING PRODUCTS, OR AT THE OPTION OF FORMICA CORPORATION, RETURN OF THE PRODUCT AND REFUND OF THE PURCHASE PRICE. BUYER ASSUMES ALL RISK WHATSOEVER AS TO THE RESULT OF THE USE OF THE PRODUCTS PURCHASED, WHETHER USED SINGLY OR IN COMBINATION WITH OTHER MATERIALS.

LIMITATION OF LIABILITY:

No claim by buyer of any kind, including claims for indemnification, whether as to quality or amount of products delivered or for non-delivery of products, shall be greater in amount than the purchase price of the products in respect of which damages are claimed. IN NO EVENT SHALL FORMICA CORPORATION BE LIABLE TO BUYER FOR ANY SPECIAL, INDIRECT, INCIDENTAL, RELIANCE, EXEMPLARY, OR CONSEQUENTIAL DAMAGES OR COVER, OR LOSS OF PROFIT, REVENUE OR USE, IN CONNECTION WITH, ARISING OUT OF, OR AS A RESULT OF, THE SALE, DELIVERY, SERVICING, USE OR LOSS OF USE OF THE PRODUCTS SOLD HEREUNDER, OR FOR ANY LIABILITY OF BUYER TO ANY THIRD PARTY WITH RESPECT THERETO. BUYER SHALL INSPECT FOR NONCONFORMITY PROMPTLY UPON RECEIPT. Failure by buyer to give Formica Corporation written notice of claim within 30 days from date of delivery or, in the case of non-delivery from the date fixed for delivery, shall constitute a waiver by buyer of all claims in respect of such products.

MANUFACTURER

Formica Corporation
10155 Reading Road
Cincinnati, Ohio 45241-5279

TECHNICAL SERVICES

Technical assistance may be obtained through your local Formica® Brand Products Distributor or from Formica Corporation trained representatives in sales offices throughout the country. To assist these representatives, Formica Corporation maintains a sales and technical services staff in Cincinnati, Ohio. For technical assistance, contact your distributor or sales representative; write the company directly at Formica Corporation Technical Services Department, 10155 Reading Road, Cincinnati, OH, 45241; call (513) 786-3578 or 1-800-FORMICA™; or fax (513) 786-3195. In Canada, call 1-800-363-1405. In Mexico, call (55) 5634-8620.

TRADEMARKS:

Formica, the Formica Anvil logo and ColorCore are registered trademarks of The Diller Corporation. 1-800-FORMICA, ZIP-CHIP and HardStop are trademarks of The Diller Corporation. The products and manufacturing processes of Formica Corporation are protected under U.S. and foreign patents.

Scotch-Brite® is a registered trademark of 3M Company.

Fantastik® is a registered trademark of DowBrands Inc.

Simple Green® is a registered trademark of Sunshine Maker's, Inc

Formula 409® and PineSol® are registered trademarks of The Clorox Company.

Mercurochrome® is a licensed trademark of Beckton Dickson.

HardieBacker® is a registered trademark of James Hardie Industries plc.

Titebond® and GreenChoice™ are registered trademarks of Franklin International

Amana Tool® is a registered trademark of Amana Tool Corporation.

ColorRite™ is a pending trademark of Color Rite, Inc.

Meditate® FR is a registered trademark of © Roseburg

All ® brands are registered trademarks of the respective owners.

All ™ brands are trademarks of the respective owners.

©2019 Formica Corporation
Cincinnati, Ohio 45241
Printed in the USA