



Merillat

CLASSIC[®]
— COLLECTION —

TIMELESS OPTIONS FOR EVERYDAY STYLE
THAT'S BUILT TO LAST.

**DESIGN
GUIDE**



MERRILLAT CABINETRY



A GREAT AMERICAN STORY

Merillat® Cabinetry was started in 1946 by Orville and Ruth Merillat. It began with Orville making cabinets by hand, and through decades of innovation, growth and unwavering commitment to the customer, it became the #1 cabinetmaker in America.



Left: Ruth and Orville Merillat are married in 1945.
Above: Orville (left) pushes a cabinet frame through a sander.



MERILLAT CABINETS

FOUNDED ON HARD WORK

The legacy continues by bringing you more than ever before with a wide range of on-trend cabinet options for simpler decisions. That are a combination of timeless design options, functional storage and the dependable performance you need.

Cover:
Ralston
Maple
Kona

DEPENDABLE CONSTRUCTION

Merillat® Cabinetry takes great pride in our craft. Our mission? To build exceptional cabinetry that will be as durable as it is beautiful. For complete details and additional information on upgrades available, visit Merillat.com.

BUILT TO LAST



Durable Standard Construction



DURABLE FINISH

Multi-step finishing system provides added value with a protective topcoat to resist scratching and stains



QUALITY CONSTRUCTION

Industrial-grade 3/8" thick, engineered wood end panels attached using wood-to-wood glue and staples. Furniture-grade plywood construction upgrade available to meet your project needs.



SOFT-CLOSING DRAWERS

Full-extension, solid wood dovetail craftsmanship with drawer glides featuring the SoftAction™ design to reduce noise and pinched fingers.



SOFT-CLOSING HINGES

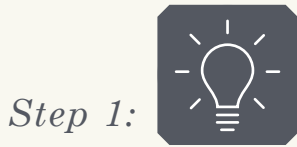
SoftAction six-way adjustable soft-closing door hinges to help ensure precise alignment and reduced noise for years to come.



BUILT TO LAST

Merillat cabinets meet or exceed the standards set by KCMA. They are an investment in the overall value of the home and will last for years to come.

YOUR KITCHEN RENOVATION



DREAM

When first looking for a kitchen or bath, anything's possible. In this section, our designers help capture your dream, relating your life with your style.



DESIGN

Once you've envisioned your dream, it's time to start making it a reality. Here, we'll show you how your designer will help you transform your tastes and lifestyle from ideas into a layout.



DECIDE

Now that you know what to look for, it's time to start making choices. Which wood? Which door style? Which color? Which accessories? There are no wrong answers. There are just the answers that are right for you.



DELIVER

Once you've made your selections, your designer will advise you on how to prepare for your new cabinetry and the Merillat® cabinetry team will give you the support you need after you have them in place.







Step 1: DREAM

Imagine the possibilities. Gather inspiration. Form your vision.

Dreaming has many components.



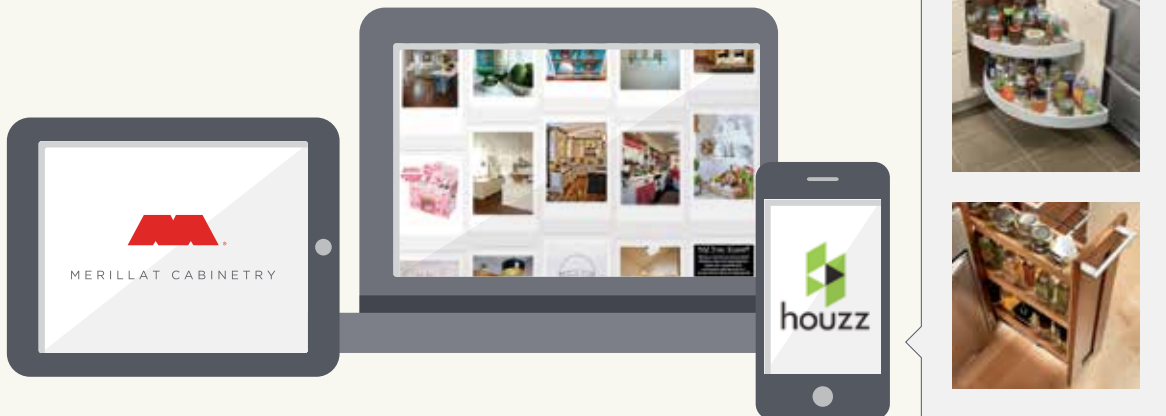
As you dream, think about your style. Do you like light and airy? Dark and dramatic? Clean and modern? There is no right or wrong answer, but style should be compatible with your tastes, your home and your lifestyle. – Nellie Ondrovick, Designer, Masco Cabinetry



Seneca Ridge
Maple
Pecan

Inspiration. Everywhere.

There are no rules to dreaming. Be encouraged to look everywhere. Take pictures. Rip out magazine pages. Browse items online. Just remember to collect your ideas in a way you can share with your design professional. They will help tie all the pieces together.



Dream with us.

To dream in Merillat® cabinetry, view our inspiration page featuring rooms of every style. Visit Merillat.com.



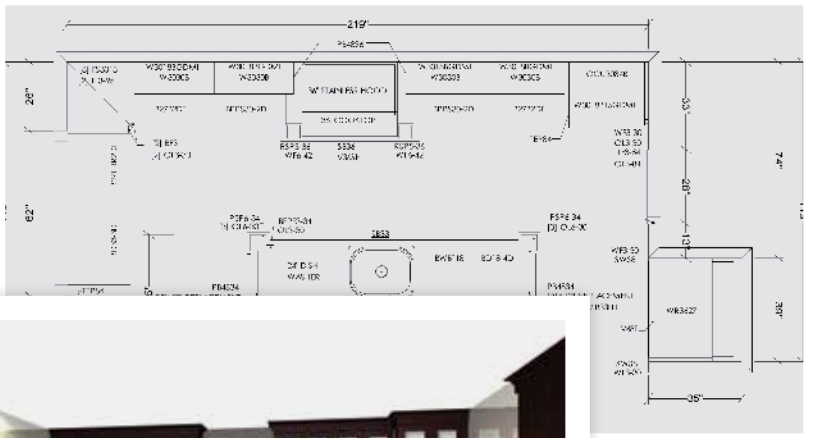
Step 2: DESIGN

Bring your dream to life. See how our designer, Lori Salem, worked with a couple to fulfill their vision.



- | He Wants | She Wants |
|----------------|---------------------|
| 1. Clean Look | 1. Clean Look |
| 2. Dark Color | 2. Light Color |
| 3. Modern Look | 3. Traditional Look |
| 4. Texture | 4. Smooth Color |

“We started with their checklist. What she wanted vs. what he wanted. We found commonalities and contrasts. And in the end, we found a beautiful solution.”



“After getting to know their wants, I put it together in a drawing. It starts with a floor plan and evolves into a 3D model they could both react to.”

Merillat Masterpiece® Collection
Hardware:
Baluster Pull & Knob





Step 3: DECIDE

Make the choices that make the space. Choose your preferences. Add function that makes the space work.

Wood Type.



Maple (M)

Maple is a popular choice featuring a fine uniform grain that takes a color quite well. Maple is versatile and available in nearly every color combination. A very consistent wood type.



Oak (O)

Oak is a heavy, hard wood, and has a medium-fine, noticeable grain. It gives you dramatic lines that play quite differently off of each color.



Cherry (C)

Cherry is moderately hard and heavy, and has a fine-to-medium uniform grain. Cherry is commonly thought of as a deep color, but is quite different depending upon your choice of stain. Expect variations.



Hickory (H)

Hickory is a very heavy, hard wood, and has a grain with quite a bit of variance. This creates a design element in and of itself, taking on colors in unique ways.

Finish Type.



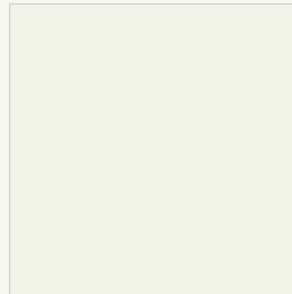
Paint (P)

Paint is a popular choice for featuring a uniform look from doors and drawer fronts to face frames. A painted drawer front or door material may be made of medium density fiberboard (MDF) to help ensure a consistent and stable product.



Stain (S)

Stains allow the natural beauty of wood to show. Each wood species has its own unique grain variation and can have a dramatically different look when stain is applied and brush-wiped. The amount of grain and natural beauty marks of wood will vary by species.



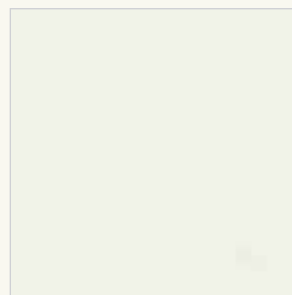
Laminate (L)

Laminate is a thermo-plastic polymer wrap that is applied to engineered wood or MDF. This cabinetry gives you a uniform appearance.



Textured Laminate (TL)

Textured Laminate is a plastic-based product that has proven to be highly durable. This cabinetry gives you a consistent appearance.



Thermofoil (T)

Thermofoil is a solid colored vinyl that is applied to smooth, engineered wood or MDF. Easy to clean and built to last, Thermofoil cabinetry gives you a uniform appearance.

Door Type.



Partial Overlay (PO)

Overlay is the amount of face frame covered by the door and drawer. The reveal on partial overlay cabinets is typically 1 inch. A partial overlay creates a traditional look and is typically less expensive.



Full Overlay (FO)

An overlay that covers most of the face frame, giving prominence to the door and drawer design. A full overlay creates a more custom and clean look.



Recessed Center Panel

The center goes inward. Recessed panel designs offer an understated elegance to your cabinetry.



Raised Center Panel

The center panel is raised. It provides design dimension and interest.



Slab Panel

A flat panel with no variance in the center. It provides a clean, modern look that dares to be simple.

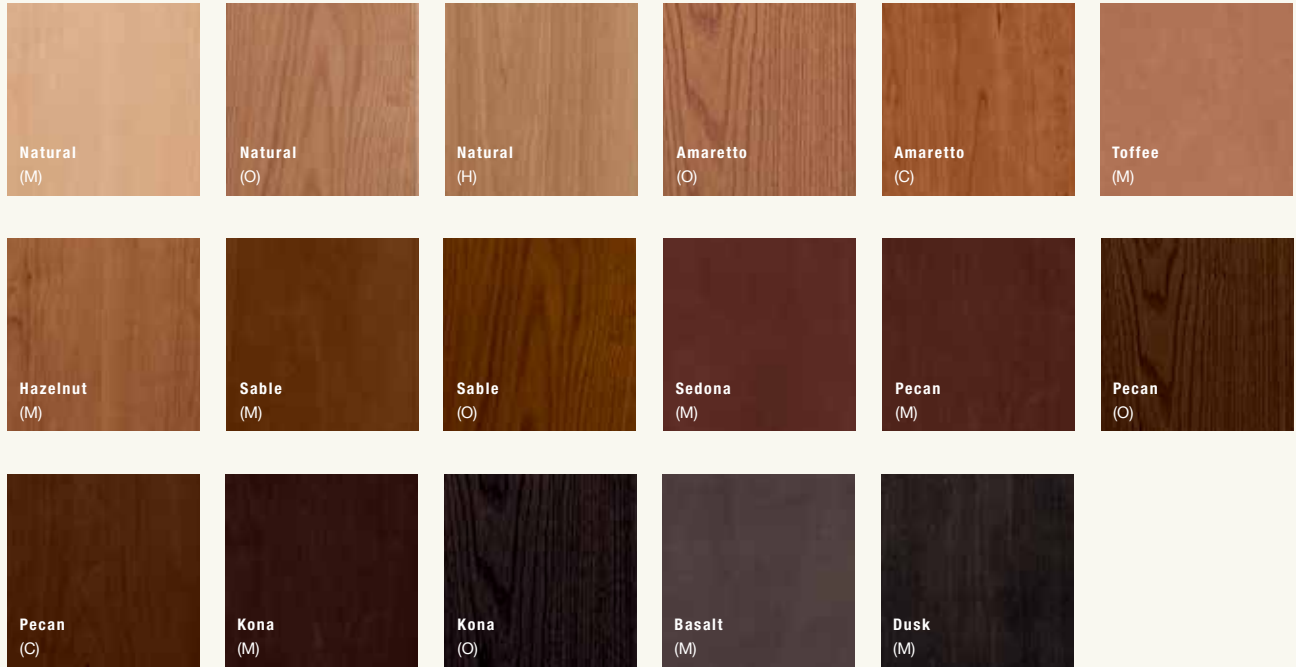




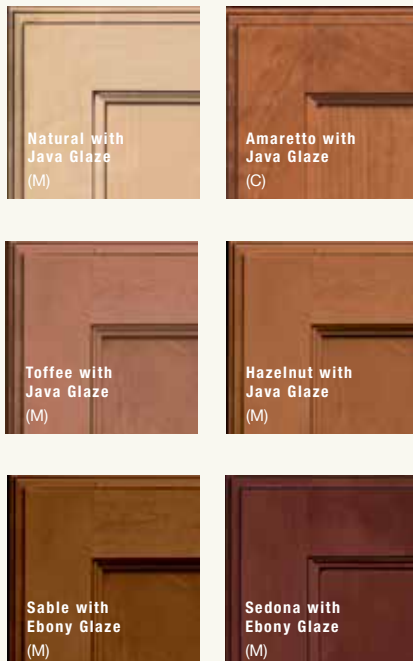
MERRILLAT CABINETS

COLORS: WHAT TO LOOK FOR.

Stain



Stain with Glaze



Glen Arbor
Maple
Dusk

Colors are selected to represent the right range of tastes and looks. These choices are both timeless and can add value to your design.

Paint



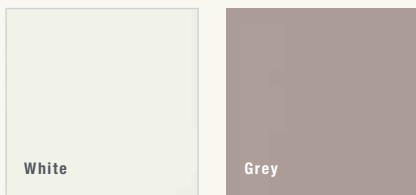
Paint with Glaze



Textured Laminate



Laminate



Thermofoil





MERILLAT CABINETS

DOOR STYLES



Avenue (M,C) (FO)



Avenue* (M,C) (FO)



Fox Harbor (M,C) (FO)



Fox Harbor* (M,C) (FO)



Fusion (M,C) (FO)



Glen Arbor (M,O,C) (PO)

Maple (M) Cherry (C) FO = Full Overlay
Oak (O) Hickory (H) PO = Partial Overlay

*Optional 5-piece drawer front shown

View all the Merillat Classic® Collection door styles side-by-side to compare and save your favorites online at Merillat.com



LaBelle (M,C) (FO)



Marlin (M) (PO)



Portrait (M,O,C) (FO)



Portrait* (M,O,C) (FO)



Ralston (M,C) (FO)



Ralston* (M,C) (FO)

Maple (M) Cherry (C) FO = Full Overlay
Oak (O) Hickory (H) PO = Partial Overlay

*Optional 5-piece drawer front shown



MERILLAT CABINETS

DOOR STYLES



Rowan (M,C) (FO)



Rowan* (M,C) (FO)



Seneca Ridge (M,O,C) (PO)



Somerton Hill (M,C) (FO)



Spring Valley (M, O, C, H) (PO)



Sutton Cliffs (M, O, C, H) (PO)

Maple (M) Cherry (C) FO = Full Overlay
Oak (O) Hickory (H) PO = Partial Overlay

*Optional 5-piece drawer front shown

View all the Merillat Classic® Collection door styles side-by-side to compare and save your favorites online at Merillat.com



Tolani (M,O,C) (FO)



Tolani** (M,O,C) (FO)



Tolani* (M,O,C) (FO)

Inserts

You can now customize your own glass insert for your cabinet door. Our glass doors can now be ordered with or without glass, allowing you to select the insert that best fits your look.



Portrait Maple Cotton with full Glass inserts



Glass

Did you know?

The door style, wood type and finish color you select are three separate choices that create your unique look. Visit Merillat.com to see all available options.

Maple (M) Cherry (C) FO = Full Overlay
Oak (O) Hickory (H) PO = Partial Overlay

*Optional 5-piece drawer front shown
**Optional 3-piece drawer front shown



MERRILLAT CABINETS

DOOR STYLES



Vance (L) (FO)



Vance* (L) (FO)



Vance (L) (FO)



Vance* (L) (FO)



Lanielle (TL) (FO)



Lanielle (TL) (FO)

(TL) Textured Laminate
(L) Laminate

FO = Full Overlay
PO = Partial Overlay

*Optional 5-piece drawer front shown



Whitebay II (T) (FO)

(T) Thermofoil

FO = Full Overlay
PO = Partial Overlay



Vance
Grey & White



Tolani
Oak
Pecan & Natural



Vance
White

Portrait
Nightfall

EXTRAS

Remember, many people regret not having more accessories or special features in their kitchen. Did you include a pull out wastebasket? What about a cutlery divider? View additional solutions that simplify your life online at Merillat.com.

“ What’s hidden behind all those doors and drawers? A lot. Here, we show you the power of great storage in your home. – Mary Jo Mosiniak, Senior Product Manager, Masco Cabinetry ”



Base Swing-out Shelves



Single Roll-out Tray



Tray Divider Roll-out



Base Pull-out



Base Wastebasket Top Mount



Deluxe Roll-out Trays



Foil Box Rack Kit



Under Sink Tote



Base Corner Revolving

COREGUARD[®] SINK BASE

For Merillat[®] cabinetry, our innovation team has taken a common problem—under-sink damage caused by minor leaks, drips and spills—and turned it into an innovative, game-changing solution. It is called the CoreGuard[®] Sink Base Cabinet.

According to a Masco Cabinetry survey, 35% of consumers have experienced under-sink damage, and our innovative product is designed to address this issue.

The CoreGuard Sink Base Cabinet resists damage from minor leaks, spills and stains, and provides for simple clean-up.

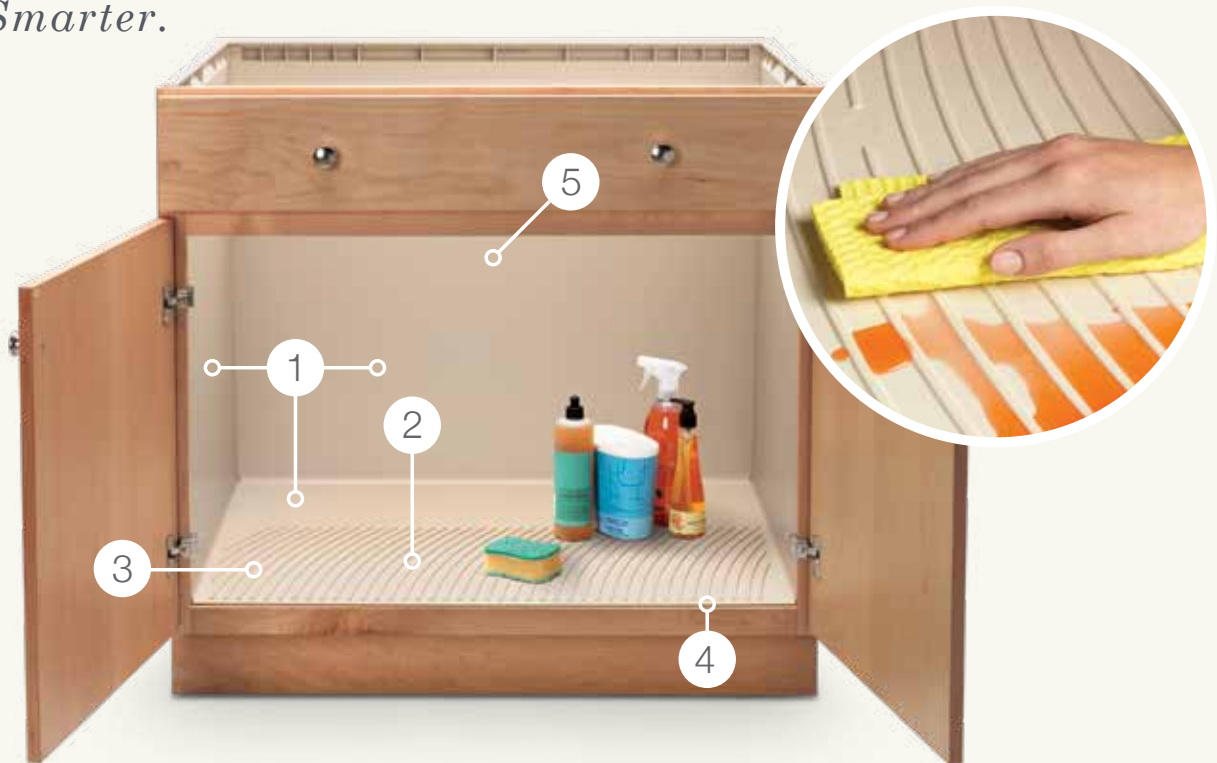
The CoreGuard Sink Base Cabinet is available with a utility tray option and comes fully assembled. It can be installed just like a standard sink base. It also comes with the same 25 year limited warranty available on Merillat Classic[®] Collection products.

 *Cleaner.*

 *Stronger.*

 *Smarter.*

COREGUARD[®]
SINK BASE



How it works:

1. Engineered polymer sides, back and floor help resist damage caused by spilled liquids and stains.
2. Raised ribs on the cabinet floor helps to keep stored items dry.
3. The cabinet floor is slightly inclined to direct flow to front of cabinet for easier detection.
4. A protective lip overlaps the bottom cabinet rail.
5. The cabinet has no center rail in between the doors, making access to the cabinet interior easier.



Step 4: DELIVER

Prepare for arrival. Ready for installation. Enjoy your new room.

Your vision. Ordered.

- Receive a final design packet or order confirmation from your designer.
- Confirm you have everything you need for your project to go smoothly. Have you ordered your new countertops? Appliances? Lighting? Backsplash? Flooring?



Your cabinets. Arrived.

- Prepare your home for construction to begin! It's almost time!
- Schedule a time for delivery with your dealer.
- Make sure you have cleaned out your old cabinets, cleared a path for your new cabinets to arrive and selected a place to store your cabinets prior to installation.
- You will soon have installers and other tradesman working in your home. Make sure your little ones (kids or pets) have a safe place to play.



Your kitchen. Installed.

- It normally takes a few days or maybe even longer depending on the complexity to get your cabinets out of the boxes and onto your walls.
- Be sure to understand the install process with your professional installer. When will they begin? What should you expect?
- Prepare to be without your kitchen or bathroom during this period. Where will you eat? How will you wash dishes? Will you put your refrigerator in another room or the garage?



Enjoy your new space and invite friends over to have a dinner party to celebrate!

YOUR DREAM. OUR PASSION.



“ This is when the process becomes all worth it. It is the result of your dream, a great designer, excellent products, a quality installer. The rest is up to you. – Mark Van Sickle, Master Craftsman, Masco Cabinetry ”

Together with you,

WE CREATE POSSIBILITIES

merillat.com



Actual colors may vary slightly due to printing limitations. For full color accuracy, please visit your Merillat® cabinetry professional. Material dimensions listed may vary slightly from actual dimensions of the product. Construction and assembly methods may vary from what is shown in samples and imagery, but do not affect KCMA certification or performance standards of products. Printed in the USA M-MCBROCHURE R 1019