



**LIST PRICES &  
SPECIFICATIONS**

**2019**

NEW with DWhite pricing

**KITCHEN KOMPACT**

Nationwide, Family-Owned

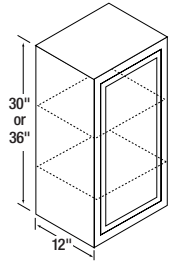


*Made In USA*

[kitchencompact.com](http://kitchencompact.com)



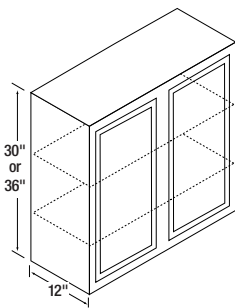
# Wall Cabinets



## 36" High Wall Cabinets (WT)

Item	Glenwood	Warmwood	Chadwood	DWhite
9WT*	\$160	160	167	172
12WT*	\$172	172	180	186
15WT*	\$177	177	186	201
18WT*	\$187	187	196	215
21WT*	\$197	197	206	232
24WT*	\$212	212	222	245
27WT	\$255	255	266	295
30WT	\$266	266	279	311
33WT	\$271	271	284	325
36WT	\$297	297	310	343

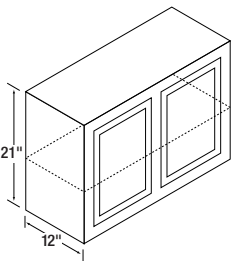
\*Single door. Single door wall units are reversible for right or left hinging, simply turn the cabinet over.



## 30" High Wall Cabinets (W)

Item	Glenwood	Warmwood	Chadwood	DWhite
9W*	\$121	121	126	152
12W*	\$137	137	144	165
15W*	\$142	142	150	179
18W*	\$151	151	158	191
21W*	\$157	157	164	205
24W*	\$171	171	179	217
27W	\$213	213	223	263
30W	\$224	224	235	276
33W	\$228	228	239	290
36W	\$238	238	249	302
42W	\$251	251	264	329
48W	\$292	292	306	356

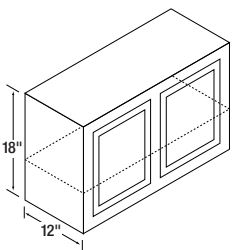
\*Single door. Single door wall units are reversible for right or left hinging, simply turn the cabinet over.



## 21" High Wall Cabinets (R)

Item	Glenwood	Warmwood	Chadwood	DWhite
24R*	\$151	151	158	180
30R	\$177	177	186	225
36R	\$187	187	196	246

\*Single door.

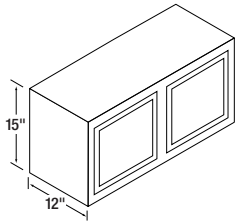


## 18" High Wall Cabinets (Y)

Item	Glenwood	Warmwood	Chadwood	DWhite
24Y*	\$138	138	145	169
30Y	\$166	166	175	202
36Y	\$176	176	184	233

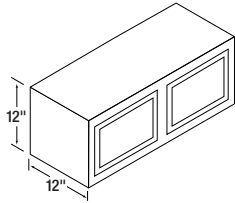
\*Single door.

# Wall Cabinets *cont'd*



## 15" High Wall Cabinets (X)

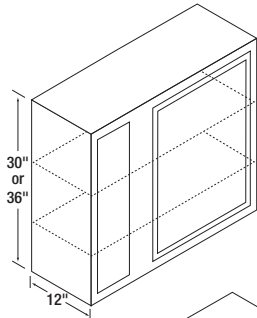
Item	Glenwood	Warmwood	Chadwood	DWhite
30X	\$156	156	164	187
33X	\$160	160	168	195
36X	\$165	165	173	204



## 12" High Wall Cabinets (X12)

Item	Glenwood	Warmwood	Chadwood	DWhite
30X12	\$147	147	154	174
36X12	\$156	156	163	187

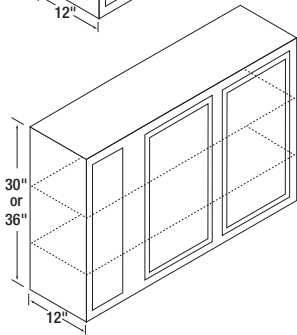
# Wall Corner Cabinets



## 36" High Wall Corner Cabinets (WCT)

Item	Glenwood	Warmwood	Chadwood	DWhite
24WCT*	\$197	197	206	243
36WCT*	\$255	255	266	308

All lines may be pulled 4-1/2".  
\*Single door.



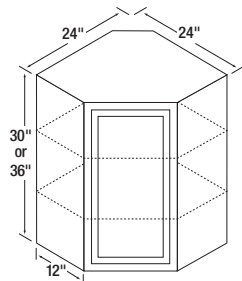
## 30" High Wall Corner Cabinets (WC)

Item	Glenwood	Warmwood	Chadwood	DWhite
24WC*	\$168	168	177	216
36WC*	\$213	213	223	269
42WC	\$242	242	254	327

All lines may be pulled 4-1/2".  
\*Single door.

**24WC Can pull to 28-1/2"** - One 6" opening. One 6" Stile. One 9" opening for a 27 x 9-1/2" door.  
**36WC Can pull to 40-1/2"** - One 6" opening. One 6" Stile. One 21" opening for a 27 x 21-1/2" door.  
**42WC Can pull to 46-1/2"** - One 6" opening. One 6" Stile. Two 12" openings for two 27 x 12-1/2" doors.  
 One 3" Stile (between 12" openings).

# Angle Wall Cabinets



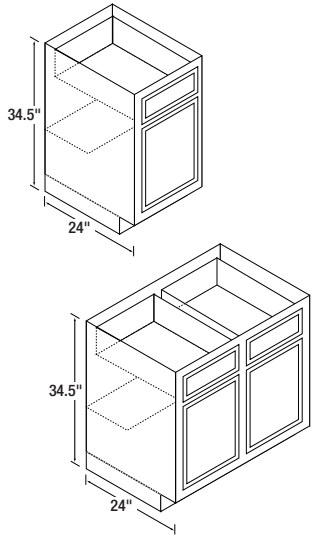
## 36" High Angle Wall Cabinet (AT)

Item	Glenwood	Warmwood	Chadwood	DWhite
24AT	\$297	297	310	314

## 30" High Angle Wall Cabinet (A)

Item	Glenwood	Warmwood	Chadwood	DWhite
24A	\$238	238	249	286

# Base Cabinets



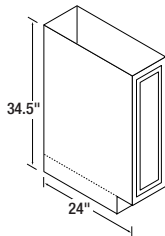
## Base Cabinets (B)

Item	Glenwood	Warmwood	Chadwood	DWhite
12B*	\$199	199	209	244
15B*	\$212	212	223	261
18B*	\$224	224	235	277
21B*	\$246	246	258	290
24B*	\$265	265	277	313
27B* (3" Side Stiles)	\$290	290	305	336
30B	\$323	323	338	401
33B (3" Side Stiles)	\$334	334	350	420
36B	\$345	345	361	436
42B	\$374	374	393	471
48B	\$395	395	415	507

Toe Kick is 4" high x 3" deep.

\*Single door. Single door base units are reversible, simply hang door right or left, using holes predrilled in rails.

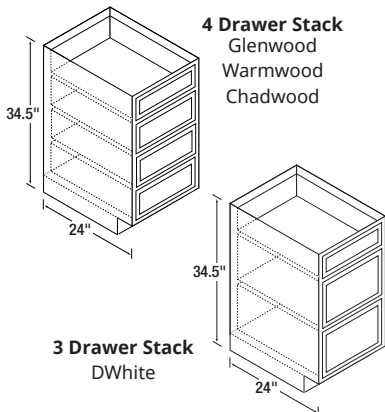
# Tray Cabinet



## Tray Cabinet (T)

Item	Glenwood	Warmwood	Chadwood	DWhite
9T	\$177	177	186	194

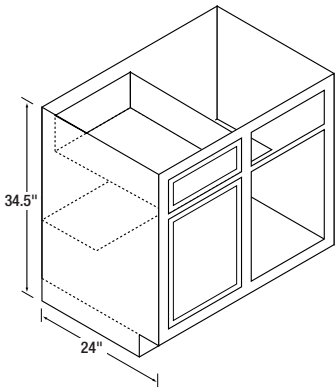
# Drawer Cabinets



## Drawer Cabinets (D)

Item	Glenwood	Warmwood	Chadwood	DWhite
15D	\$305	305	319	383
18D	\$324	324	339	413
24D	\$367	367	384	474
	Available only as 4 drawer stack	Available only as 4 drawer stack	Available only as 4 drawer stack	Available only as 3 drawer stack

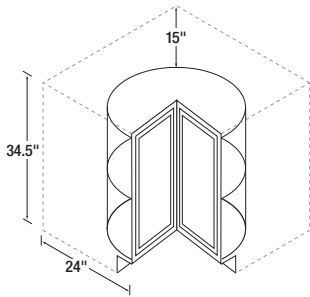
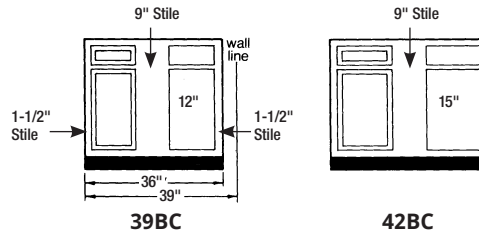
# Base Corner Cabinets



## Base Corner Cabinets (BC)

Item	Glenwood	Warmwood	Chadwood	DWhite
39BC	\$286	286	300	355
42BC	\$304	304	318	381

39BC must be pulled to 39" and may be pulled to 46". 42BC may be pulled to 49".

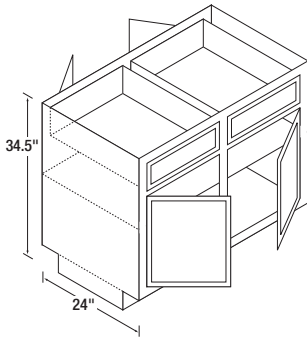


## Lazy Susan Corner Cabinet (LS)

Item	Glenwood	Warmwood	Chadwood	DWhite
36LS	\$474	474	496	474

Lazy Susan is 34-1/2" high and takes up 36" on each wall. Actual shelf is 24" diameter. Shipped without end panels.

# Peninsula Base Cabinets

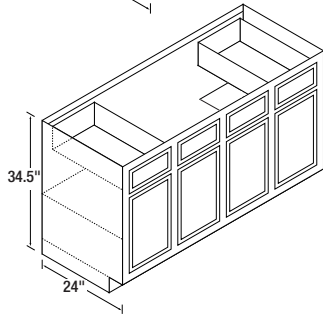
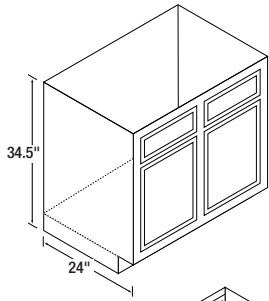


## Peninsula Base Cabinets (P)

Item	Glenwood	Warmwood	Chadwood	DWhite
36B-P	\$511	511	536	597
48B-P	\$591	591	621	707
48BC-P	\$524	524	550	633

BC-P indicates Blind Corner Peninsula.

# Range & Sink Base Cabinets



## Range & Sink Base Cabinets (RBS)

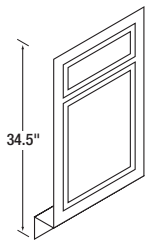
Item	Glenwood	Warmwood	Chadwood	DWhite
30RBS	\$271	271	284	345
33RBS (3" Side Stiles)	\$275	275	288	363
36RBS	\$287	287	301	365
42RBS	\$316	316	331	399

## Sink Base Cabinets (SB)

Item	Glenwood	Warmwood	Chadwood	DWhite
60SB	\$508	508	534	635

No shelf under sink (center section) and no back on cabinet.  
Combination unit consists of 15-30-15.  
Opening between drawers on **60SB** is 33".

# Sink Front

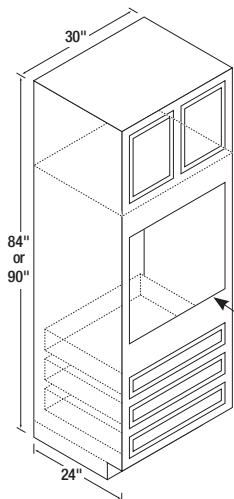


## Sink Front (SF)

Item	Glenwood	Warmwood	Chadwood	DWhite
18SF*	\$113	113	118	144

\*Square edge.

# Oven Cabinets



## 90" High Oven Cabinet (OUT)

Item	Glenwood	Warmwood	Chadwood	DWhite
30OUT	\$968	968	1,015	926

Metal support rails included.

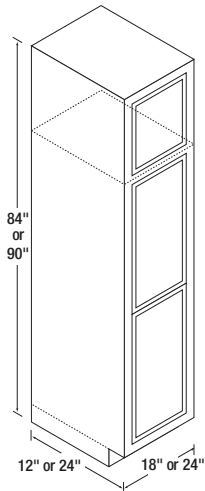
## 84" High Oven Cabinet (OU)

Item	Glenwood	Warmwood	Chadwood	DWhite
30OU	\$775	775	814	865

Metal support rails included.

To accommodate almost every type of oven, the opening can be cut from a minimum width of 21" to a maximum width of 28.5" and a minimum height of 27.5" to a maximum height of 60" (One or more lower drawers may need to be removed).

# Broom Cabinets



## 90" High Broom Cabinets (BRT)

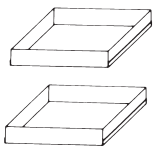
Item	Glenwood	Warmwood	Chadwood	DWhite
18BRWT (12" deep)	\$452	452	474	488
18BRBT (24" deep)	\$529	529	554	633
24BRBT (24" deep)	\$754	754	790	693

## 84" High Broom Cabinets (BR)

Item	Glenwood	Warmwood	Chadwood	DWhite
18BRW (12" deep)	\$389	389	407	449
18BRB (24" deep)	\$455	455	477	578
24BRB (24" deep)	\$604	604	633	634

No shelves included with **Broom Cabinets**. Optional **Shelf Kit** Includes four (4) shelves and clips: **18BRW/BRWT** kits @ \$45/kit, **18BRB/18BRBT** kits @ \$84/kit, and **24BRB/BRBT** kits @ \$112/kit.

# Accessories



## Accessories

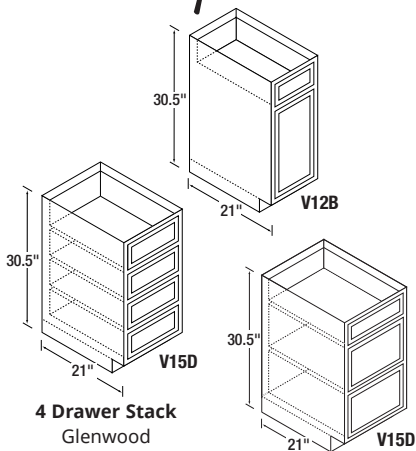
Item	Glenwood	Warmwood	Chadwood	DWhite
Pantry/Base Roll-Out Tray (priced per box – packaged 2 trays per box)				
15BT	\$136	136	136	136
18BT	\$148	148	148	148
24BT	\$156	156	156	156

# Vanity Cabinets

## 30.5" High Vanity Cabinets (V)

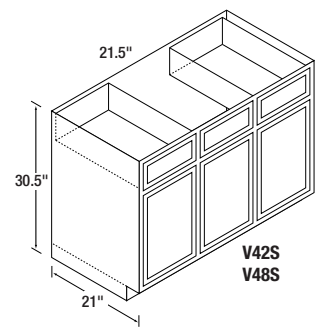
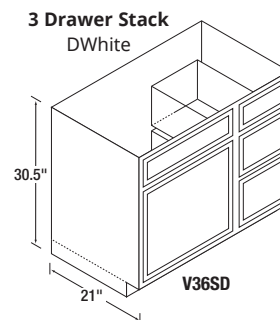
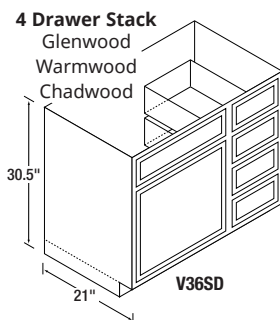
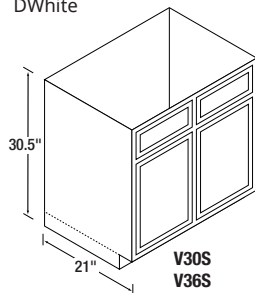
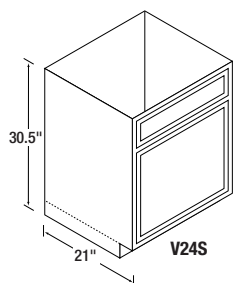
Item	Glenwood	Warmwood	Chadwood	DWhite
V12B	\$199	199	209	217
V15D	\$277	277	290	328
V24S	\$235	235	246	248
V30S	\$258	258	271	292
V36S	\$287	287	301	316
V36SD	\$351	351	368	400
V42S*	\$366	366	383	429
V48S*	\$386	386	405	461

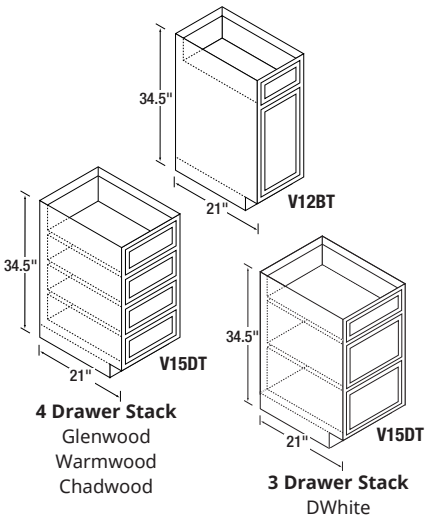
Opening between drawers on **V42S/V48S** is 21.5".  
\*Two outside working drawers.



**4 Drawer Stack**  
Glenwood  
Warmwood  
Chadwood

**3 Drawer Stack**  
DWhite

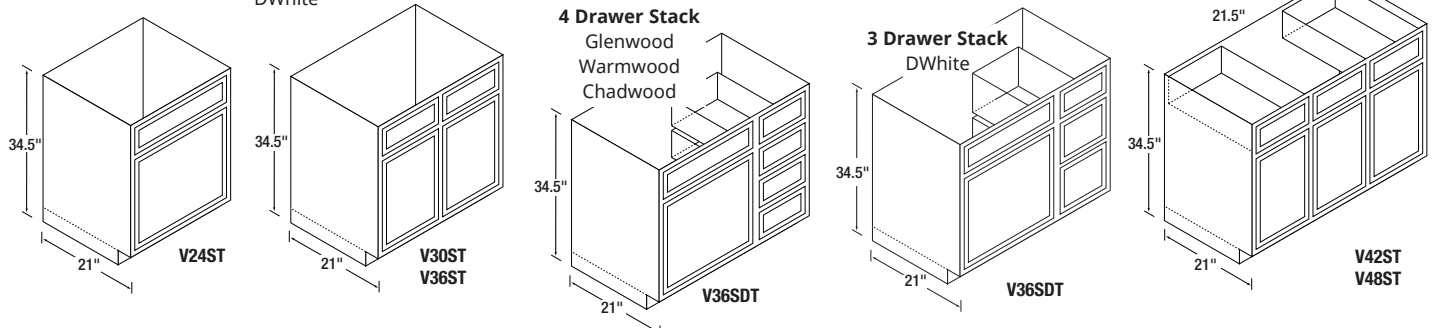




**34.5" High Vanity Cabinets (VT)**

Item	Glenwood	Warmwood	Chadwood	DWhite
V12BT	\$220	220	NA	234
V15DT	\$311	311	NA	375
V24ST	\$254	254	NA	258
V30ST	\$281	281	NA	316
V36ST	\$316	316	NA	346
V36SDT	\$387	387	NA	453
V42ST*	\$379	379	NA	466
V48ST*	\$399	399	NA	499

Opening between drawers on **V42S/V48S** is 21.5".  
 \*Two outside working drawers.



**All Standard/Tall Vanities 21" Deep.**

# Miscellaneous Items

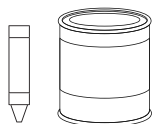
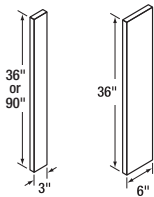
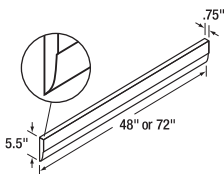
## Miscellaneous Items

Item	Glenwood	Warmwood	Chadwood	DWhite
<b>Valance Boards</b>				
48" Val 3/4" x 5-1/2" x 48" (6 to box)				
Per piece	\$43	43	61	53
72" Val 3/4" x 5-1/2" x 72" (6 to box)				
Per piece	\$57	57	81	70

<b>Filler Strips</b>				
3" Filler Strips 3"W x 36"L (12 to box)				
Per piece	\$21	21	26	26
6" Filler Strips 6"W x 36"L (6 to box)				
Per piece	\$33	33	53	41
3" Filler Strips 3"W x 90"L (12 to box)				
Per piece	\$46	46	64	57

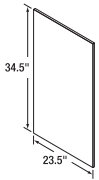
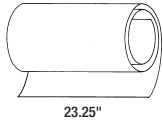
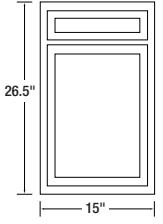
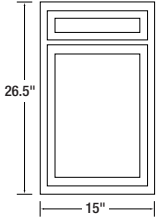
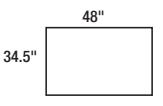
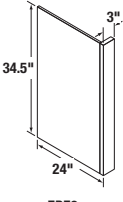
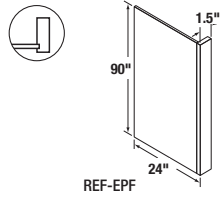
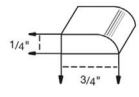
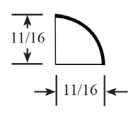
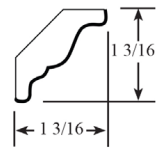
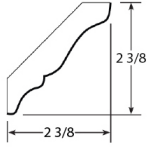
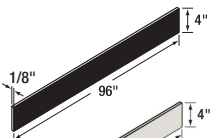
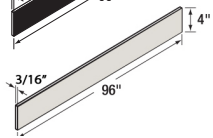
<b>Touch-Up</b>				
Touch-Up Sticks (12 to box)				
Per stick	\$27	27	27	N/A
Pints of Stain				
Per pint	\$48	48	31	N/A

Touch-up kits for DWhite coming soon.





# Miscellaneous Items cont'd

Item	Glenwood	Warmwood	Chadwood	DWhite
	<b>Base End Panels – EP</b> May be used R or L 1/2" x 23-1/2" x 34-1/2" (6 to box) Per piece			
	\$46	46	46	57
	<b>END COVERS</b> (self-adhesive backing) <b>Base End Cover – 23-1/4" x 34-1/2"</b> (6 to box) Per piece			
	\$110	110	99	135
	<b>Oven End Cover – 23-1/4" x 90"</b> (6 to box) Per piece			
	\$301	301	270	368
	<b>Salesman Sample Door &amp; Frame</b> 15" x 26-1/2" Front (4 to box) Per piece			
	\$120	120	126	161
	<b>Back Panels</b> (also for dishwashers) 3/16" x 34-1/2" x 48" (6 to box) Per piece			
	\$125	125	112	153
	<b>End Panel Faced – EPF3</b> Faced with 3" stile. 1/2" x 24" x 34-1/2" (4 to box) Per piece			
	\$84	84	88	103
	<b>REF – EPF</b> (Refrigerator End Panel) Faced with 1.5" stile. 1/2" x 24" x 90" (2 to box) Per piece			
	\$192	192	201	321
	<b>Scribe Molding</b> 1/4" x 3/4" x 96" (63 pieces/504' to box) Per piece			
	\$30	30	20	30
	<b>Quarter Round Molding</b> 11/16" x 11/16" x 96" (25 pieces/200' to box) Per piece			
	\$25	25	24	25
	<b>CROWN MOLDING</b> <b>Small Crown Molding</b> 1-3/16" x 1-3/16" x 96" (15 pieces/120' to box) Per piece			
	\$42	42	40	42
	<b>Large Crown Molding</b> 2-3/8" x 2-3/16" x 96" (16 pieces/128' to box) Per piece			
	\$68	68	67	68
	<b>Toe Kick Material</b> Black Hardboard 1/8" x 4" x 96" (25 pieces/200' to box) Per piece			
	\$10	10	10	10
	<b>Matching Toe Kick Material</b> Finished TK 3/16" x 4" x 96" (25 pieces/200' to box) Per piece			
	\$42	42	38	42

# ADA Accessible Cabinets

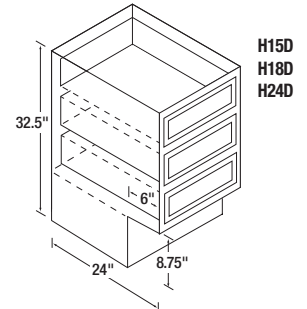
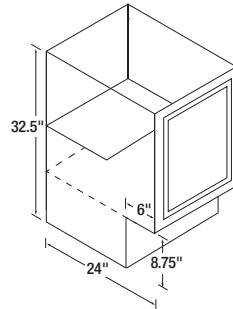
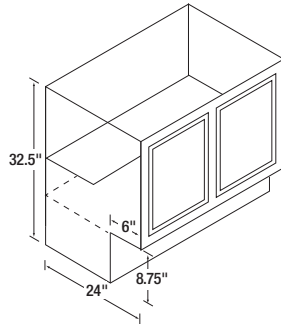
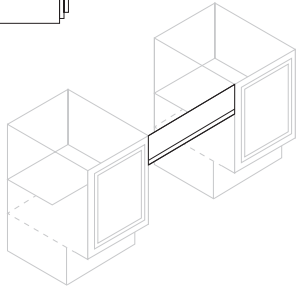
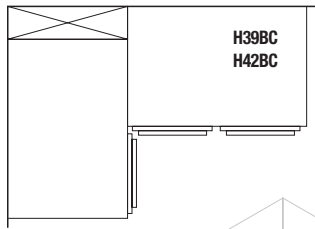
Price is plus 15% over standard base cabinet.

Kitchen Kompact offers 32-1/2" high base cabinets to help comply with ADA (Americans with Disabilities Act) requirements. Such cabinets are especially important for multi-family projects subject to HUD and FHA funding. Kitchen Kompact will only provide ADA accessible cabinets on multi-family projects where the ADA accessible units are 10% or less of the entire project. These cabinets are special order and are available in all door styles. Please allow a minimum of two weeks for delivery.

## Handicapped Design Cabinets (H)

Handicapped Design cabinets include:

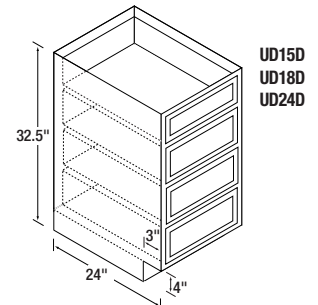
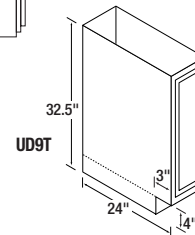
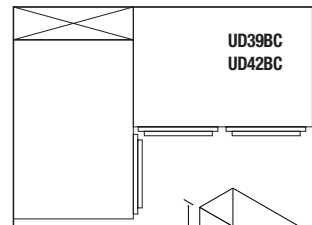
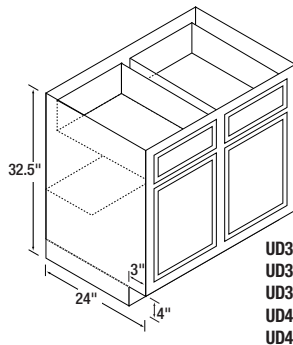
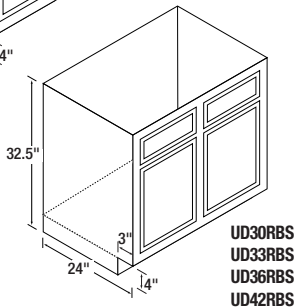
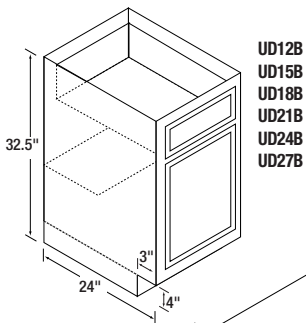
- Height of 32.5"
- Toe Kick is 8.75"
- No drawers on base cabinet



## Universal Design Cabinets (UD)

Universal Design cabinets include:

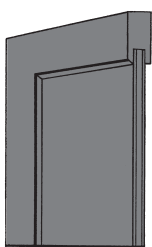
- Height of 32.5"
- Standard 4" Toe Kick
- Functioning drawers



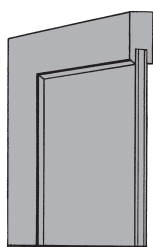
## Door Styles

### Glenwood and Warmwood:

Shaker style door frames are made of solid beech, mortised and tenoned. The recessed plywood insert is three-ply with a rotary cut hard maple veneer. Drawer heads have routed finger pulls.



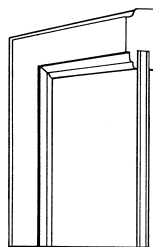
Glenwood



Warmwood

### Chadwood:

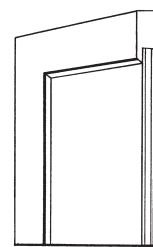
Solid Appalachian oak frames are joined by mortise and tenon. The recessed plywood insert is three-ply with a rotary cut red oak veneer. Drawer heads have routed finger pulls.



Chadwood Oak

### DWhite:

Painted white shaker style door frames are made of solid beech, mortised and tenoned. The recessed plywood insert is three-ply with a rotary cut hard maple veneer. Drawer heads have routed finger pulls.



DWhite

# Specifications

## Cabinet Construction

All face frames are 3/4" kiln-dried rails, joined by mortise and tenon with glue. Glenwood, Warmwood, and DWhite face frames are built using a mixture of solid beech and sycamore. Chadwood face frames are built using solid oak. All wall and base cabinets have 1/8" backs. Wall cabinets equipped with solid wood hanging rails at back, both top and bottom. End panels are wood veneered, 1/2" thick engineered wood core plywood, fastened to front frame with tongue-in-groove construction. Tops and bottoms of 3/16" hardboard dadoed into sides, interlocked into hanging rails of all wall units, and secured with an adhesive for added strength.

## Finish

A 4-step process is applied to the exterior finish of Glenwood, Warmwood, and Chadwood: Stain, Sealer, Sanding, and Catalyzed Top Coat.

A 3-step process is applied to the exterior finish of DWhite: Primer, Sanding, and Enamel.

## Wood Characteristics & Finishes

On all wood products, expansion, contraction, and warping are typical due to changes in climate conditions. Painted finishes may develop slight separation lines, finish breaks, and seam lines. These changes will be most noticeable at the stiles, rails, and panel joints. Painted and stained finishes are also susceptible to changes in color due to exposure to natural light, extreme heat, smoke, etc. The changes may become more noticeable over time and through seasonal changes. These changes are normal and are not considered quality defects.

## Shelves

All wall cabinets feature adjustable shelves. A selection of six different heights is built into each 30" high and taller wall cabinet. On 2-door wall units, the center 3" stile is used for center support of adjustable shelves. It is recommended that a 1/4" hole be drilled in the back for additional center support. The extra shelf clip is provided. Shelves are 1/2" engineered wood, with rounded front edge and printed wood grain.

## Hardware

Chadwood, Glenwood, Warmwood and DWhite feature concealed self-closing hinges – no door pulls included.

## Vanities

Vanity size cabinets are available in all lines. Tall vanities only available in Glenwood, Warmwood, and DWhite.

## Doors

*Chadwood:* Door frames are mortised and tenoned construction of solid oak. The recessed plywood insert is three-ply with a rotary cut red oak veneer.

*Glenwood/Warmwood:* Shaker style door frames are made of solid beech, mortised and tenoned. The recessed plywood insert is three-ply with a rotary cut hard maple veneer.

*DWhite:* Painted white shaker style door frames are made of solid beech, mortised and tenoned. The recessed plywood insert is three-ply with a rotary cut hard maple veneer.

## Drawers

Plywood drawers are standard on all lines. The drawers operate with a full front to back epoxy coated suspension system on nylon rollers.

Drawer fronts of solid oak and beech with routed finger grips on the bottom for easy opening.

## Oven Cabinets

Oven cabinets are made to accommodate almost every type oven by removing the necessary lower drawer units. Metal support rails are included.

## ADA Accessible Cabinets

Kitchen Kompact will only provide ADA accessible cabinets on multi-family projects where the ADA accessible units are 10% or less of the entire project. ADA accessible cabinets are available, on special order, in a limited number of sizes.

## Outline Specifications

Kitchen cabinets shall be as manufactured by Kitchen Kompact according to the company's material specifications. Finishes and cabinet units (Chadwood, Glenwood, Warmwood and DWhite) are as specified by size and type according to Kitchen Kompact stock catalogs. Cabinets are reversible so there is no need to specify left or right. Hardware, finish, materials, and other requirements shall be as specified by Kitchen Kompact. Each cabinet is shipped individually and in its own carton.

## Cabinet Code Descriptions

For ease of ordering, the numerical designation indicates the cabinet width, the letter identifies the height.

## Flexible Installation

Wall cabinets are reversible for right- or left-hand installation. Base cabinets come hinged left, but can be easily reversed by moving hinges to predrilled right-hand locations.

## General Information

Orders are taken subject to our approval. Any changes must be made within four days after date of our acknowledgment. If this notice is not received, cabinets will be shipped according to the acknowledgment. Orders are not subject to cancellation without our written consent. Do not return merchandise to factory without our permission. All merchandise shipped in good condition - any damage claims must be made with delivering carrier.

For Installation and Care  
Guidelines, visit our website!  
[kitchenkompact.com](http://kitchenkompact.com)

SUBJECT TO CHANGE WITHOUT NOTICE.  
SHIPMENTS F.O.B. JEFFERSONVILLE.  
Kitchen Kompact cabinets meet or exceed the American National Standards Institute #A161.1 recommended minimum construction and performance standards for kitchen and vanity cabinets.

*Kitchen Kompact, Inc. reserves the right to change design, specifications or materials without being obliged to incorporate such changes in products of prior manufacture. The artwork and specifications contained herein are the property of Kitchen Kompact, Inc., and may not be copied or reproduced without the written consent of the company.*



Kitchen Kompact, Inc.  
911 East 11th St. (47130)  
P.O. Box 868  
Jeffersonville, IN 47131-0868  
(812) 282-6681 Phone  
(812) 282-7880 Fax

***kitchenkompact.com***



Kitchen Kompact is certified under the Kitchen Cabinet Manufacturers Association's Environmental Stewardship Program\*.

\* This certification has been recognized by the National Association of Home Builders' (NAHB) with the Green Building Award for Advocate of the Year for its environmental and sustainability achievements.